

## Recombinant Human IL5 protein, His-Avi-tagged

Cat. No. IL5-051H Lot. No. (See product label)

### SPECIFICATION

<b>Product Overview</b>	Recombinant Human IL5 protein(P05113)(Ile20-Ser134), fused with N-terminal His and Avi tag, was expressed in HEK293.
<b>Species</b>	Human
<b>Source</b>	HEK293
<b>ProteinLength</b>	Ile20-Ser134
<b>Tag</b>	N-His-Avi
<b>Form</b>	Lyophilized from 0.22µm filtered solution in PBS (pH 7.4). Normally 5% trehalose is added as protectant before lyophilization.
<b>Bio-activity</b>	Immobilized Human IL-5, His Tag at 1ug/ml (100ul/Well) on the plate. Dose response curve for Human IL-5 R alpha, hFc Tag with the EC50 of 11.7ng/ml determined by ELISA (QC Test).
<b>Molecular Mass</b>	The protein has a predicted MW of 16.1 kDa. Due to glycosylation, the protein migrates to 18-25 kDa based on Tris-Bis PAGE result.
<b>Endotoxin</b>	Less than 1EU per µg by the LAL method.
<b>Purity</b>	> 95% as determined by Tris-Bis PAGE;> 95% as determined by HPLC

 Tel: 1-631-559-9269 1-516-512-3133

 Email: [info@creative-biomart.com](mailto:info@creative-biomart.com)  Fax: 1-631-938-8127

 45-1 Ramsey Road, Shirley, NY 11967, USA

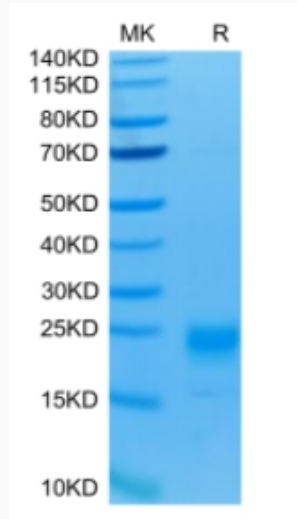
<b>Storage</b>	Reconstituted protein stable at -80°C for 12 months, 4°C for 1 week. Use a manual defrost freezer and avoid repeated freeze-thaw cycles.
<b>Reconstitution</b>	Centrifuge tubes before opening. Reconstituting to a concentration more than 100 µg/ml is recommended. Dissolve the lyophilized protein in distilled water.
<b>GENE INFORMATION</b>	
<b>Gene Name</b>	IL5 interleukin 5 (colony-stimulating factor, eosinophil) [ Homo sapiens ]
<b>Official Symbol</b>	IL5
<b>Synonyms</b>	IL5; interleukin 5 (colony-stimulating factor, eosinophil); interleukin-5; B cell differentiation factor I; EDF; eosinophil differentiation factor; IL 5; interleukin 5; T cell replacing factor; TRF; T-cell replacing factor; B-cell differentiation factor I; IL-5;
<b>Gene ID</b>	3567
<b>mRNA Refseq</b>	NM_000879
<b>Protein Refseq</b>	NP_000870
<b>MIM</b>	147850
<b>UniProt ID</b>	P05113

 Tel: 1-631-559-9269 1-516-512-3133

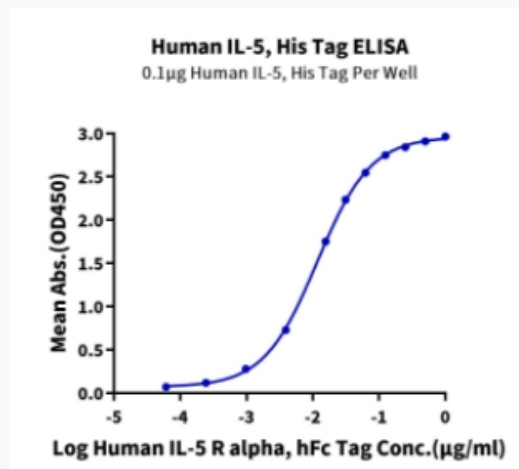
 Email: [info@creative-biomart.com](mailto:info@creative-biomart.com)  Fax: 1-631-938-8127

 45-1 Ramsey Road, Shirley, NY 11967, USA

**Tris-Bis PAGE**



**ELISA Data**



 Tel: 1-631-559-9269 1-516-512-3133

 Email: [info@creative-biomart.com](mailto:info@creative-biomart.com)  Fax: 1-631-938-8127

 45-1 Ramsey Road, Shirley, NY 11967, USA