

Recombinant Cattle IL5 Protein, His-tagged

Cat. No. IL5-2322C Lot. No. (See product label)

SPECIFICATION

Product Overview	Recombinant Cattle IL5 Protein (Val22-Ser134) with a N-His tag was expressed in E. coli.
Species	Cattle
Source	E.coli
ProteinLength	Val22-Ser134
Description	Factor that induces terminal differentiation of late-developing B-cells to immunoglobulin secreting cells.
Form	Freeze-dried powder
Molecular Mass	Predicted Molecular Mass: 16.7 kDa Accurate Molecular Mass: 17 kDa
Endotoxin	<1.0 EU per 1g (determined by the LAL method).
Purity	> 95%
Applications	Positive Control; Immunogen; SDS-PAGE; WB.
Stability	The thermal stability is described by the loss rate. The loss rate was determined by accelerated thermal degradation test, that is, incubate the protein at 37 centigrade for

 Tel: 1-631-559-9269 1-516-512-3133

 Email: info@creative-biomart.com  Fax: 1-631-938-8127

 45-1 Ramsey Road, Shirley, NY 11967, USA

48h, and no obvious degradation and precipitation were observed. The loss rate is less than 5% within the expiration date under appropriate storage condition.

Storage

Avoid repeated freeze/thaw cycles. Store at 2-8 centigrade for one month. Aliquot and store at -80 centigrade for 12 months.

Storage Buffer

20mM Tris, 150mM NaCl, pH8.0, containing 1mM EDTA, 1mM DTT, 0.01% SKL, 5% Trehalose and Proclin300.

Reconstitution

Reconstitute in 20mM Tris, 150mM NaCl (pH8.0) to a concentration of 0.1-1.0 mg/mL. Do not vortex.

GENE INFORMATION

Gene Name

IL5 interleukin 5 [*Bos taurus* (cattle)]

Official Symbol

IL5

Synonyms

IL5; interleukin 5; TRF; IL-5; interleukin-5
T-cell replacing factor
colony-stimulating factor, eosinophil
eosinophil differentiation factor

Gene ID

280825

mRNA Refseq

NM_173922

Protein Refseq

NP_776347

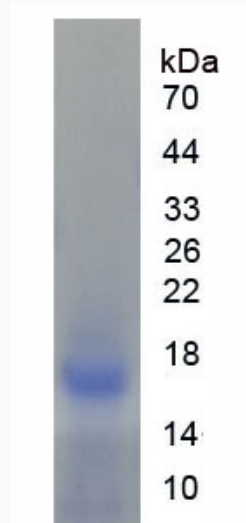
UniProt ID

P52173

 Tel: 1-631-559-9269 1-516-512-3133

 Email: info@creative-biomart.com  Fax: 1-631-938-8127

 45-1 Ramsey Road, Shirley, NY 11967, USA



 Tel: 1-631-559-9269 1-516-512-3133

 Email: info@creative-biomart.com  Fax: 1-631-938-8127

 45-1 Ramsey Road, Shirley, NY 11967, USA