

## Recombinant Human IL5RA protein, hFc-tagged

Cat. No. IL5RA-6744H Lot. No. (See product label)

### SPECIFICATION

<b>Product Overview</b>	Recombinant Human IL5RA protein(Q01344-1)(Asp21-Glu335), fused with C-terminal hFc tag, was expressed in HEK293.
<b>Species</b>	Human
<b>Source</b>	HEK293
<b>ProteinLength</b>	Asp21-Glu335
<b>Tag</b>	C-hFc
<b>Form</b>	Supplied as 0.22µm filtered solution in PBS (pH 7.4).
<b>Bio-activity</b>	Immobilized Human IL-5, His Tag at 1ug/ml (100ul/Well) on the plate. Dose response curve for Human IL-5 R alpha, hFc Tag with the EC50 of 11.7ng/ml determined by ELISA.
<b>Molecular Mass</b>	The protein has a predicted MW of 62.6 kDa. Due to glycosylation, the protein migrates to 70-80 kDa based on Tris-Bis PAGE result.
<b>Endotoxin</b>	Less than 1EU per µg by the LAL method.
<b>Purity</b>	> 95% as determined by Tris-Bis PAGE;> 95% as determined by HPLC
<b>Storage</b>	Valid for 12 months from date of receipt when stored at -80°C. Recommend to aliquot

 Tel: 1-631-559-9269 1-516-512-3133

 Email: [info@creative-biomart.com](mailto:info@creative-biomart.com)  Fax: 1-631-938-8127

 45-1 Ramsey Road, Shirley, NY 11967, USA

the protein into smaller quantities for optimal storage. Please do not repeated freeze-thaw cycles.

**Reconstitution**

It is recommended that sterile water be added to the vial to prepare a stock solution of 0.2 ug/ul. Centrifuge the vial at 4°C before opening to recover the entire contents.

## GENE INFORMATION

**Gene Name** [IL5RA interleukin 5 receptor, alpha \[ Homo sapiens \]](#)

**Official Symbol** [IL5RA](#)

**Synonyms**

IL5RA; interleukin 5 receptor, alpha; IL5R; interleukin-5 receptor subunit alpha; CD125; CDw125; CD125 antigen; IL-5R subunit alpha; IL-5 receptor subunit alpha; interleukin 5 receptor type 3; interleukin-5 receptor alpha chain; HSIL5R3; MGC26560;

**Gene ID** [3568](#)

**mRNA Refseq** [NM\\_000564](#)

**Protein Refseq** [NP\\_000555](#)

**MIM** [147851](#)

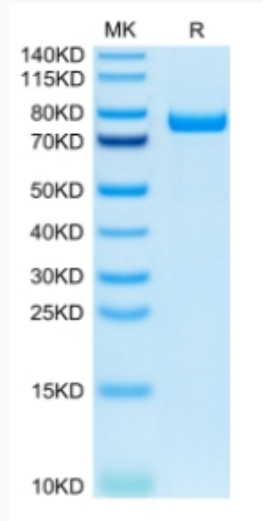
**UniProt ID** [Q01344](#)

 Tel: 1-631-559-9269 1-516-512-3133

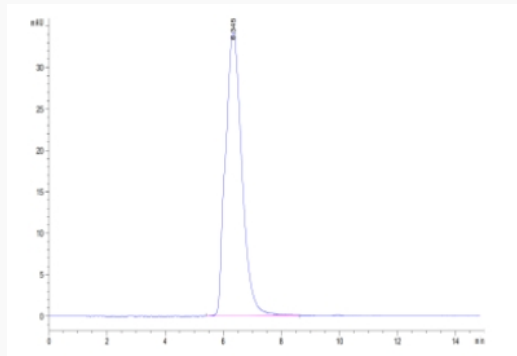
 Email: [info@creative-biomart.com](mailto:info@creative-biomart.com)  Fax: 1-631-938-8127

 45-1 Ramsey Road, Shirley, NY 11967, USA

**Tris-Bis PAGE**



**ELISA Data**



 Tel: 1-631-559-9269 1-516-512-3133

 Email: [info@creative-biomart.com](mailto:info@creative-biomart.com)  Fax: 1-631-938-8127

 45-1 Ramsey Road, Shirley, NY 11967, USA