

Recombinant Ferret IL6 Protein, Met1-Ile174, C-His tagged

Cat. No. IL6-013F Lot. No. (See product label)

SPECIFICATION

Product Overview	Recombinant Ferret IL6 Protein (Met1-Ile174) with C-His tag was expressed in HEK293.
Species	Ferret
Source	HEK293
ProteinLength	Met1-Ile174
Description	Interleukin 6 (IL-6) is a soluble cytokine that can effect inflammation, immune response, and hematopoiesis. IL-6 signals through IL-6R, which can occur as a transmembrane or a soluble receptor that is found in serum. IL-6 is generated immediately following environmental stresses such as infections and tissue injuries. Dysregulation of IL-6, which can lead to over production, may contribute to chronic inflammation and autoimmunity.
Form	Lyophilized
Molecular Mass	Predicted Molecular Mass: 25.5 kDa SDS-PAGE: 33.6 kDa
Purity	> 95% as analyzed by SDS-PAGE
Applications	ELISA and Western Blot Analysis

 Tel: 1-631-559-9269 1-516-512-3133

 Email: info@creative-biomart.com  Fax: 1-631-938-8127

 45-1 Ramsey Road, Shirley, NY 11967, USA

Notes	For Research Use Only.
Storage	2 years at -20 to -80 centigrade as supplied. 1 month at 4 centigrade after reconstitution with preservative. 1 year at -20 to -80 centigrade after reconstitution.
Storage Buffer	Lyophilized from 1xPBS with Trelahose
Shipping	Ambient
Reconstitution	Reconstitute at 25 µg/mL in sterile PBS containing at least 0.1% protein

GENE INFORMATION

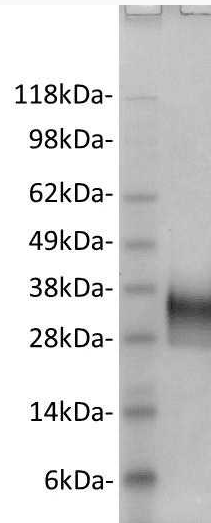
Gene Name	IL6 interleukin 6 [<i>Mustela putorius furo</i> (domestic ferret)]
Official Symbol	IL6
Synonyms	IL6; interleukin 6; HGF; BSF2; IL-6; IFNB2; interleukin-6; interleukin 6 (interferon, beta 2)
Gene ID	101671465
mRNA Refseq	NM_001310169
Protein Refseq	NP_001297098
UniProt ID	A3FBE9

 Tel: 1-631-559-9269 1-516-512-3133

 Email: info@creative-biomart.com  Fax: 1-631-938-8127

 45-1 Ramsey Road, Shirley, NY 11967, USA

**Ferret IL-6 (2 μ g) on
a Coomassie stained
4-12% SDS-PAGE
gel, reducing
conditions.**



 Tel: 1-631-559-9269 1-516-512-3133

 Email: info@creative-biomart.com  Fax: 1-631-938-8127

 45-1 Ramsey Road, Shirley, NY 11967, USA