

Active GMP Recombinant Porcine IL6 Protein, His-Tagged

Cat. No. IL6-01P Lot. No. (See product label)

SPECIFICATION

Product Overview	GMP Recombinant Porcine IL6 Protein, His-Tagged was expressed in Escherichia coli cell-derived in an animal component free process under cGMP guidelines.
Species	Porcine
Source	E.coli
Description	Interleukin 6 (IL-6) is an interleukin that acts as both a pro-inflammatory cytokine and an anti-inflammatory myokine. In humans, it is encoded by the IL6 gene. In addition, osteoblasts secrete IL-6 to stimulate osteoclast formation. Smooth muscle cells in the tunica media of many blood vessels also produce IL-6 as a pro-inflammatory cytokine. IL-6's role as an anti-inflammatory myokine is mediated through its inhibitory effects on TNF-alpha and IL-1, and activation of IL-1ra and IL-10.
Form	Lyophilized
Bio-activity	Measure by its ability to induce proliferation in T1165.85.2.1 cells. The ED50 for this effect is <1.5 ng/mL.
AA Sequence	MGRLEEDAKGDATSDKMLFTSPDKTEELIKYILGKISAMRKEMCEKYEKCENSKEVL AENNLNLPKMAEKDGCQSGFNQETCLMRITGLVEFQIYLDYLQKEYESNKGNVE AVQISTKALIQTLRQKGKPNPKATTPNPTTNAAGLLDKLQSQNEWMKNTKIILIRSLED FLQFSLRAIRIM with polyhistidine tag at the C-terminus
Endotoxin	<0.1 EU per 1 µg of the protein by the LAL method.

 Tel: 1-631-559-9269 1-516-512-3133

 Email: info@creative-biomart.com  Fax: 1-631-938-8127

 45-1 Ramsey Road, Shirley, NY 11967, USA

Purity	>98% as determined by SDS-PAGE. Ni-NTA chromatography
Notes	Please use within one month after protein reconstitution.
Storage	Lyophilized protein should be stored at -20°C. Upon reconstitution, protein aliquots should be stored at -20°C or -80°C.
Storage Buffer	The protein was lyophilized from a solution containing 1X PBS, pH 7.4.
Reconstitution	It is recommended to reconstitute the lyophilized protein in sterile H ₂ O to a concentration not less than 100 µg/mL and incubate the stock solution for at least 20 min to ensure sufficient re-dissolved.

GENE INFORMATION

Gene Name	IL6 interleukin 6 [<i>Sus scrofa</i> (pig)]
Official Symbol	IL6
Gene ID	399500
mRNA Refseq	NM_214399.1
Protein Refseq	NP_999564.1
UniProt ID	P26893

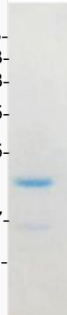
 Tel: 1-631-559-9269 1-516-512-3133

 Email: info@creative-biomart.com  Fax: 1-631-938-8127

 45-1 Ramsey Road, Shirley, NY 11967, USA

kDa

75-
63-
48-
35-
25-
17-
11-



 Tel: 1-631-559-9269 1-516-512-3133

 Email: info@creative-biomart.com  Fax: 1-631-938-8127

 45-1 Ramsey Road, Shirley, NY 11967, USA