

Active Recombinant Human IL6 Protein (30-212aa), N-His-tagged

Cat. No. IL6-02H Lot. No. (See product label)

SPECIFICATION

Product Overview	Recombinant interleukin-6 (30-212aa) with N-His tag was expressed in E. coli and purified by conventional chromatography, after refolding of the isolated inclusion bodies in a renaturation buffer.
Species	Human
Source	E.coli
ProteinLength	30-212aa
Description	This gene encodes a cytokine that functions in inflammation and the maturation of B cells. In addition, the encoded protein has been shown to be an endogenous pyrogen capable of inducing fever in people with autoimmune diseases or infections. The protein is primarily produced at sites of acute and chronic inflammation, where it is secreted into the serum and induces a transcriptional inflammatory response through interleukin 6 receptor, alpha. The functioning of this gene is implicated in a wide variety of inflammation-associated disease states, including susceptibility to diabetes mellitus and systemic juvenile rheumatoid arthritis. Elevated levels of the encoded protein have been found in virus infections, including COVID-19 (disease caused by SARS-CoV-2).
Form	Liquid
Bio-activity	Measured in a cell proliferation assay using TF-1 human erythroleukemic cell. The

 Tel: 1-631-559-9269 1-516-512-3133

 Email: info@creative-biomart.com  Fax: 1-631-938-8127

 45-1 Ramsey Road, Shirley, NY 11967, USA

	ED50 range ≤ 0.8 ng/mL.
Molecular Mass	23.1 kDa (204aa) confirmed by MALDI-TOF
AA Sequence	VPPGEDSKDVAAPHRQPLTSSERIDKQIRYILDGIALRKETCNKSNMCESSKEALAE NNLNLPKMAEKDGCQSGFNEETCLVKIITGLLEFEVYLEYLQNRFESSEEQARAVQ MSTKVLIQFLQKKAKNLDAITTPDPTTNASLLTKLQAQNQWLQDMTTHLILRSFKEFL QSSLRALRQM
Endotoxin	< 1 EU/μg of protein (determined by LAL method)
Purity	> 95% by SDS-PAGE
Applications	SDS-PAGE, Bioactivity
Storage	Can be stored at +2 to +8 centigrade for 1 week. For long term storage, aliquot and store at -20 to -80 centigrade. Avoid repeated freezing and thawing cycles.
Concentration	0.5 mg/mL (determined by Bradford assay)
Storage Buffer	Phosphate-Buffered Saline (pH 7.4) containing 10% glycerol
GENE INFORMATION	
Gene Name	IL6 interleukin 6 [Homo sapiens (human)]
Official Symbol	IL6
Synonyms	IL6; interleukin 6; CDF; HGF; HSF; BSF2; IL-6; BSF-2; IFNB2; IFN-beta-2; interleukin-6; B-cell differentiation factor; B-cell stimulatory factor 2; CTL differentiation factor; hybridoma growth factor; interferon beta-2; interleukin BSF-2

 Tel: 1-631-559-9269 1-516-512-3133

 Email: info@creative-biomart.com  Fax: 1-631-938-8127

 45-1 Ramsey Road, Shirley, NY 11967, USA

Gene ID 3569

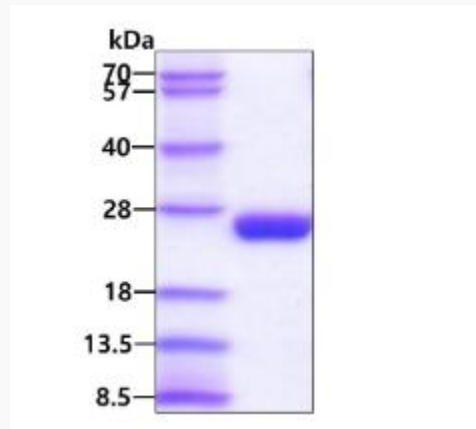
mRNA Refseq NM_000600

Protein Refseq NP_000591

MIM 147620

UniProt ID P05231

SDS-PAGE



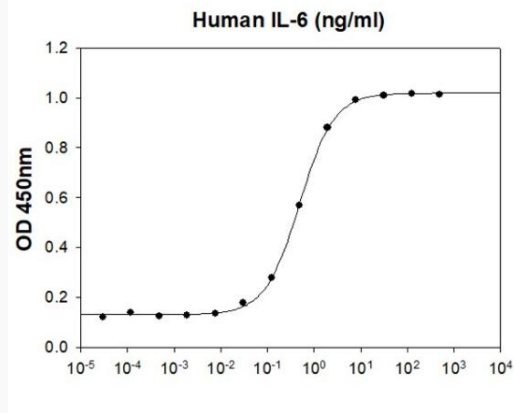
3 μ g by SDS-PAGE under reducing condition and visualized by coomassie blue stain.

 Tel: 1-631-559-9269 1-516-512-3133

 Email: info@creative-biomart.com  Fax: 1-631-938-8127

 45-1 Ramsey Road, Shirley, NY 11967, USA

Biological Activity



Human IL-6 stimulates cell proliferation of the TF-1 human erythroleukemic cells.
The ED50 range ≤ 0.8 ng/ml.

 Tel: 1-631-559-9269 1-516-512-3133

 Email: info@creative-biomart.com  Fax: 1-631-938-8127

 45-1 Ramsey Road, Shirley, NY 11967, USA