

Active Recombinant Human IL6 Protein, Pre-aliquoted

Cat. No. IL6-09H Lot. No. (See product label)

SPECIFICATION

Product Overview	Recombinant Human IL6 Protein, Pro29 - Met212, was expressed in E. coli.
Species	Human
Source	E.coli
ProteinLength	Pro29-Met212
Description	<p>This gene encodes a cytokine that functions in inflammation and the maturation of B cells. In addition, the encoded protein has been shown to be an endogenous pyrogen capable of inducing fever in people with autoimmune diseases or infections. The protein is primarily produced at sites of acute and chronic inflammation, where it is secreted into the serum and induces a transcriptional inflammatory response through interleukin 6 receptor, alpha. The functioning of this gene is implicated in a wide variety of inflammation-associated disease states, including susceptibility to diabetes mellitus and systemic juvenile rheumatoid arthritis. Elevated levels of the encoded protein have been found in virus infections, including COVID-19 (disease caused by SARS-CoV-2).</p>
Bio-activity	<p>Measured in a cell proliferation assay using T1165.85.2.1 mouse plasmacytoma cells. The ED50 for this effect is 0.2-0.8 ng/mL.</p>
Molecular Mass	<p>Predicted Molecular Mass:20.3 kDa SDS-PAGE: 21 kDa, reducing conditions</p>

 Tel: 1-631-559-9269 1-516-512-3133

 Email: info@creative-biomart.com  Fax: 1-631-938-8127

 45-1 Ramsey Road, Shirley, NY 11967, USA

N-terminal Sequence Analysis	Pro29
Endotoxin	< 0.10 EU/μg of the protein by the LAL method.
Purity	> 97% by SDS-PAGE under reducing conditions and visualized by silver stain.
Stability	<p>Use a manual defrost freezer and avoid repeated freeze-thaw cycles.</p> <ul style="list-style-type: none"> • 6 months from date of receipt at room temperature as supplied. • 12 months from date of receipt at 2-8 centigrade as supplied. • 1 month at 2-8 centigrade under sterile conditions after reconstitution. • 3 months at -20 to -80 centigrade under sterile conditions after reconstitution.
Reconstitution	For a stock solution, reconstitute at 100 μg/mL in sterile PBS, or simply roll ProDot directly into cell culture medium for immediate use.
Shipping	The product is shipped at ambient temperature.

GENE INFORMATION

Gene Name	IL6 interleukin 6 [Homo sapiens (human)]
Official Symbol	IL6
Synonyms	IL6; interleukin 6; CDF; HGF; HSF; BSF2; IL-6; BSF-2; IFNB2; IFN-beta-2; interleukin-6; B-cell differentiation factor; B-cell stimulatory factor 2; CTL differentiation factor; hybridoma growth factor; interferon beta-2; interleukin BSF-2
Gene ID	3569
mRNA Refseq	NM_000600

 Tel: 1-631-559-9269 1-516-512-3133

 Email: info@creative-biomart.com  Fax: 1-631-938-8127

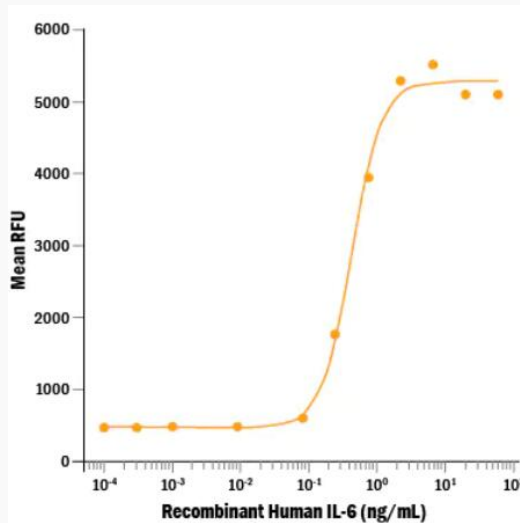
 45-1 Ramsey Road, Shirley, NY 11967, USA

Protein Refseq NP_000591

MIM 147620

UniProt ID Q75MH2

Bio-activity



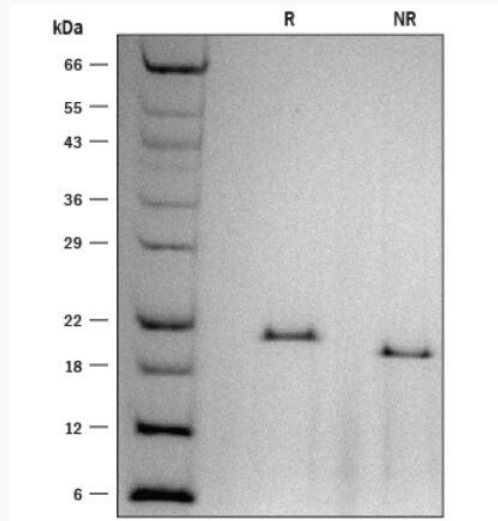
Recombinant Human IL-6 stimulates cell proliferation of the T1165.85.2.1 mouse plasmacytoma cell line. The ED50 for this effect is 0.2-0.8 ng/mL.

 Tel: 1-631-559-9269 1-516-512-3133

 Email: info@creative-biomart.com  Fax: 1-631-938-8127

 45-1 Ramsey Road, Shirley, NY 11967, USA

SDS-PAGE



1 μ g/lane of Recombinant Human IL-6 was resolved with SDS-PAGE under reducing (R) and non-reducing (NR) conditions and visualized with silver staining, showing a single band at 21 and 20 kDa, respectively.

Tel: 1-631-559-9269 1-516-512-3133

Email: info@creative-biomart.com Fax: 1-631-938-8127

45-1 Ramsey Road, Shirley, NY 11967, USA