

## Active Recombinant Dog IL6 protein, His-tagged

Cat. No. IL6-1045D Lot. No. (See product label)

### SPECIFICATION

<b>Product Overview</b>	Active Recombinant Dog IL6 protein(P41323)(18~207 aa), fused with N-terminal His tag, was expressed in E.coli.
<b>Species</b>	Dog
<b>Source</b>	E.coli
<b>ProteinLength</b>	18-207 aa
<b>Form</b>	Lyophilized from sterile PBS, pH7.4, containing 0.01% SKL, 1mM DTT, 5% Trehalose and Proclin300.
<b>Bio-activity</b>	Interleukin 6 (IL-6) is an interleukin that acts as both a pro-inflammatory cytokine and an anti-inflammatory myokine. Interleukin 6 is secreted by T cells and macrophages to stimulate immune response and also plays a role in fighting infection. It supports the growth of B cells and is antagonistic to regulatory T cells. To test the effect of IL6 on cell proliferation, TF-1 cells were seeded into triplicate wells of 96-well plates at a density of 20,000 cells/well with various concentrations of recombinant dog IL6. After incubated for 72 hours, cells were observed by inverted microscope and cell proliferation was measured by Cell Counting Kit-8(CCK-8). Briefly, 10 µof CCK-8 solution was added to each well of the plate, then the absorbance at 450 nm was measured using a microplate reader after incubating the plate for 1-4 hours at 37°C. Proliferation of TF-1 cells after incubation with IL6 for 72 hours observed by inverted microscope was shown. Cell viability was assessed by CCK-8 (Cell Counting Kit-8 )

 Tel: 1-631-559-9269 1-516-512-3133

 Email: [info@creative-biomart.com](mailto:info@creative-biomart.com)  Fax: 1-631-938-8127

 45-1 Ramsey Road, Shirley, NY 11967, USA

assay after incubation with recombinant dog IL6 for 72 hours. It was obvious that recombinant dog IL6 significantly increased cell viability of TF-1 cells, the EC50 was 0.04-0.08 ug/ml.

<b>Molecular Mass</b>	24.9kDa
<b>Endotoxin</b>	<1.0EU per 1µg (determined by the LAL method).
<b>Purity</b>	> 95% as determined by SDS-PAGE.
<b>Storage</b>	Avoid repeated freeze/thaw cycles. Store at -20°C for 12 months. Aliquot and store at -80°C for 12 months.
<b>Reconstitution</b>	Reconstitute in ddH2O to a concentration of 0.1-0.2 mg/mL. Do not vortex.

## GENE INFORMATION

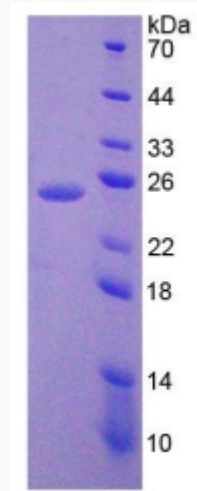
<b>Gene Name</b>	IL6 interleukin 6 (interferon, beta 2) [ <i>Canis lupus familiaris</i> ]
<b>Official Symbol</b>	IL6
<b>Synonyms</b>	IL6; interleukin 6 (interferon, beta 2); interleukin-6; IL-6;
<b>Gene ID</b>	403985
<b>mRNA Refseq</b>	NM_001003301
<b>Protein Refseq</b>	NP_001003301

 Tel: 1-631-559-9269 1-516-512-3133

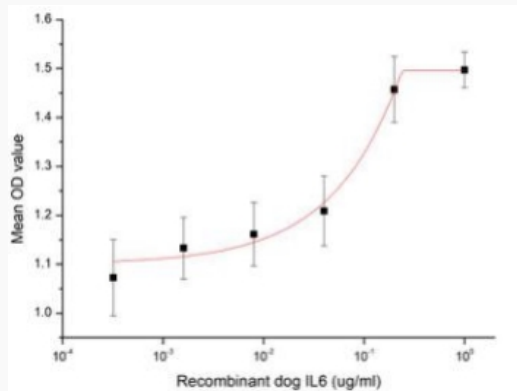
 Email: [info@creative-biomart.com](mailto:info@creative-biomart.com)  Fax: 1-631-938-8127

 45-1 Ramsey Road, Shirley, NY 11967, USA

**SDS-PAGE**



**Activity**



 Tel: 1-631-559-9269 1-516-512-3133

 Email: [info@creative-biomart.com](mailto:info@creative-biomart.com)  Fax: 1-631-938-8127

 45-1 Ramsey Road, Shirley, NY 11967, USA