

Recombinant Human IL6 protein, His-tagged

Cat. No. IL6-1045H Lot. No. (See product label)

SPECIFICATION

Product Overview	Recombinant Human IL6 protein(25-211 aa), fused with N-terminal His tag, was expressed in E. coli.
Species	Human
Source	E.coli
ProteinLength	25-211 aa
Tag	N-His
Form	The purified protein was Lyophilized from sterile PBS (58mM Na ₂ HPO ₄ , 17mM NaH ₂ PO ₄ , 68mM NaCl, pH7.4). 5 % trehalose and 5 % mannitol are added as protectant before lyophilization.
Purity	90%, by SDS-PAGE with Coomassie Brilliant Blue staining.
Storage	Short-term storage: Store at 2-8°C for (1-2 weeks). Long-term storage: Aliquot and store at -20°C to -80°C for up to 3 months, reconstitution with sterile water and addition of an equal volume of glycerol. Avoid repeat freeze-thaw cycles.
Reconstitution	Reconstitute at 0.25 µg/µl in 200 µl sterile water for short-term storage. After reconstitution with sterile water, if glycerol has no effect on subsequent experiments, it is recommended to add an equal volume of glycerol for long-term storage.

 Tel: 1-631-559-9269 1-516-512-3133

 Email: info@creative-biomart.com  Fax: 1-631-938-8127

 45-1 Ramsey Road, Shirley, NY 11967, USA

AA Sequence

FPTSQVRRGDFTEDTTPNRPVYTTSQVGGGLITHVLWEIVEMRKELCNGNSDCMNND
 DALAENNLKLPFIQRNDGICYQTGYNQEICLLKISSGLLEYHSYLEYMKNNLKDNNK
 KARVLQRDTEITLIHIFNQEVKDLHKIVLPTPISNALLTDKLESQKEWLRRTKTIQFILKSL
 EEFLKVTLRSTRQT

GENE INFORMATION

Gene Name [IL6 interleukin 6 \(interferon, beta 2\) \[Homo sapiens \]](#)

Official Symbol [IL6](#)

Synonyms

IL6; interleukin 6 (interferon, beta 2); IFNB2; interleukin-6; BSF2; HGF; HSF; IL 6;
 CDF; BSF-2; IFN-beta-2; interferon beta-2; interleukin BSF-2; hybridoma growth
 factor; CTL differentiation factor; B-cell stimulatory factor 2; B-cell differentiation
 factor; IL-6;

Gene ID [3569](#)

mRNA Refseq [NM_000600](#)

Protein Refseq [NP_000591](#)

MIM [147620](#)

UniProt ID [P05231](#)

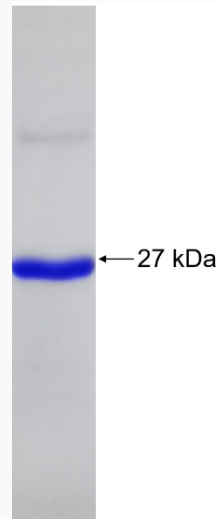
 Tel: 1-631-559-9269 1-516-512-3133

 Email: info@creative-biomart.com  Fax: 1-631-938-8127

 45-1 Ramsey Road, Shirley, NY 11967, USA



SDS-PAGE



Tel: 1-631-559-9269 1-516-512-3133

Email: info@creative-biomart.com Fax: 1-631-938-8127

45-1 Ramsey Road, Shirley, NY 11967, USA