

Active Recombinant Human IL6 protein, GST-tagged

Cat. No. IL6-1047H Lot. No. (See product label)

SPECIFICATION

Product Overview	Active Recombinant Human IL6 protein(P05231)(29~212 aa), fused with N-terminal GST tag, was expressed in E.coli.
Species	Human
Source	E.coli
ProteinLength	29-212 aa
Form	Lyophilized from sterile 20mM Tris, 150mM NaCl, pH8.0, containing 1mM EDTA, 1mM DTT, 0.01% SKL, 5% Trehalose and Proclin300.
Bio-activity	Interleukin-6 (IL-6), a pro-inflammatory cytokine and an anti-inflammatory myokine, plays important roles in the acute phase reaction, inflammation, hematopoiesis, bone metabolism, and cancer progression. It has been reported that IL-6 significantly increased the MMP-10 protein lever in the human lung cancer A549 cells through the JAK/STAT signaling pathway. Briefly, A549 cells were seeded into 6-well cell culture clusters and allowed to grow to 50-70% confluence, then different concentrations of IL-6 was added. After incubated for 24h, the protein levels of MMP-10 in the cell supernatant were determined by Western blot.
Molecular Mass	46.9kDa
Purity	> 95% as determined by SDS-PAGE.

 Tel: 1-631-559-9269 1-516-512-3133

 Email: info@creative-biomart.com  Fax: 1-631-938-8127

 45-1 Ramsey Road, Shirley, NY 11967, USA

Storage Avoid repeated freeze/thaw cycles. Store at -20°C for 12 months. Aliquot and store at -80°C for 12 months.

Reconstitution Reconstitute in 20mM Tris, 150mM NaCl (pH8.0) to a concentration of 0.1-1.0 mg/mL. Do not vortex.

GENE INFORMATION

Gene Name IL6 interleukin 6 (interferon, beta 2) [Homo sapiens]

Official Symbol IL6

Synonyms IL6; interleukin 6 (interferon, beta 2); IFNB2; interleukin-6; BSF2; HGF; HSF; IL 6; CDF; BSF-2; IFN-beta-2; interferon beta-2; interleukin BSF-2; hybridoma growth factor; CTL differentiation factor; B-cell stimulatory factor 2; B-cell differentiation factor; IL-6;

Gene ID 3569

mRNA Refseq NM_000600

Protein Refseq NP_000591

MIM 147620

UniProt ID P05231

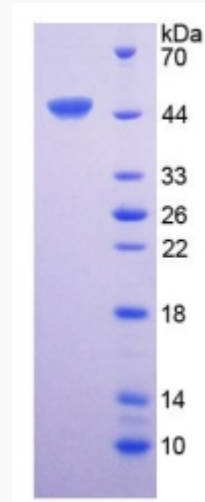
 Tel: 1-631-559-9269 1-516-512-3133

 Email: info@creative-biomart.com  Fax: 1-631-938-8127

 45-1 Ramsey Road, Shirley, NY 11967, USA



SDS-PAGE



Tel: 1-631-559-9269 1-516-512-3133

Email: info@creative-biomart.com Fax: 1-631-938-8127

45-1 Ramsey Road, Shirley, NY 11967, USA