

Active Recombinant Pig IL6 protein, His-tagged

Cat. No. IL6-1049P Lot. No. (See product label)

SPECIFICATION

Product Overview Active Recombinant Pig IL6 protein(P26893)(29~212 aa), fused with N-terminal His tag, was expressed in E.coli.

Species Pig

Source E.coli

ProteinLength 29-212 aa

Form Lyophilized from sterile 20mM Tris, 150mM NaCl, pH8.0, containing 1mM EDTA, 1mM DTT, 0.01% SKL, 5% Trehalose and Proclin300.

Bio-activity Interleukin 6 (IL-6) is an interleukin that acts as both a pro-inflammatory cytokine and an anti-inflammatory myokine. Interleukin 6 is secreted by T cells and macrophages to stimulate immune response and also plays a role in fighting infection. It supports the growth of B cells and is antagonistic to regulatory T cells. To test the effect of IL6 on cell proliferation, Raji cells were seeded into triplicate wells of 96-well plates at a density of 5,000 cells/well with 1% serum standard 1640 which contains various concentrations of recombinant pig IL6. After incubated for 5 days, cells were observed by inverted microscope and cell proliferation was measured by Cell Counting Kit-8 (CCK-8). Briefly, 10 μ of CCK-8 solution was added to each well of the plate, then the absorbance at 450nm was measured using a microplate reader after incubating the plate for 1-4 hours at 37°C. Proliferation of Raji cells after incubation with IL6 for 5 days observed by inverted microscope was shown. Cell viability was

 Tel: 1-631-559-9269 1-516-512-3133

 Email: info@creative-biomart.com  Fax: 1-631-938-8127

 45-1 Ramsey Road, Shirley, NY 11967, USA

assessed by CCK-8 (Cell Counting Kit-8) assay after incubation with recombinant IL6 for 5 days. It was obvious that IL6 significantly increased cell viability of Raji cells.

Molecular Mass	24.0kDa
Endotoxin	<1.0EU per 1µg (determined by the LAL method).
Purity	> 95% as determined by SDS-PAGE.
Storage	Avoid repeated freeze/thaw cycles. Store at -20°C for 12 months. Aliquot and store at -80°C for 12 months.
Reconstitution	Reconstitute in 20mM Tris, 150mM NaCl (pH8.0) to a concentration of 0.1-1.0 mg/mL. Do not vortex.

GENE INFORMATION

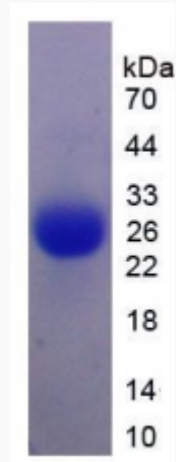
Gene Name	IL6 interleukin 6 (interferon, beta 2) [<i>Sus scrofa</i>]
Official Symbol	IL6
Synonyms	IL6; interleukin 6 (interferon, beta 2); interleukin-6; IL-6; interleukin-6 protein;
Gene ID	399500
mRNA Refseq	NM_214399
Protein Refseq	NP_999564

 Tel: 1-631-559-9269 1-516-512-3133

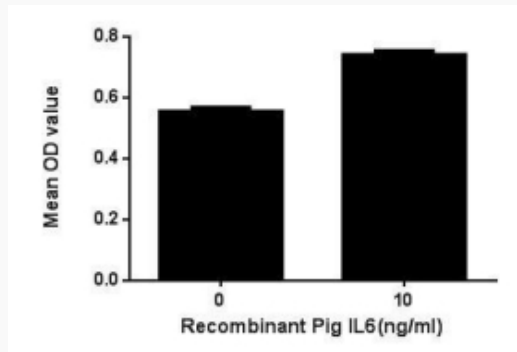
 Email: info@creative-biomart.com  Fax: 1-631-938-8127

 45-1 Ramsey Road, Shirley, NY 11967, USA

SDS-PAGE



Activity



 Tel: 1-631-559-9269 1-516-512-3133

 Email: info@creative-biomart.com  Fax: 1-631-938-8127

 45-1 Ramsey Road, Shirley, NY 11967, USA