

Recombinant Ferret IL6 Protein, His tagged

Cat. No. IL6-15F Lot. No. (See product label)

SPECIFICATION

Product Overview	Recombinant Ferret IL6 Protein, Sourced from HEK293, Met1-Ile174, with C-terminal His Tag.
Species	Ferret
Source	HEK293
ProteinLength	1-174 aa
Description	Interleukin 6 (IL-6) is a soluble cytokine that can effect inflammation, immune response, and hematopoiesis. IL-6 signals through IL-6R, which can occur as a transmembrane or a soluble receptor that is found in serum. IL-6 is generated immediately following environmental stresses such as infections and tissue injuries. Dysregulation of IL-6, which can lead to over production, may contribute to chronic inflammation and autoimmunity.
Form	Lyophilized from 1x PBS with Trehalose
Molecular Mass	25.5 kDa
Purity	>95% by SDS-PAGE
Applications	ELISA and Western Blot Analysis
Storage	2 years at -20 to -80 centigrade as supplied. 1 month at 4 centigrade after

 Tel: 1-631-559-9269 1-516-512-3133

 Email: info@creative-biomart.com  Fax: 1-631-938-8127

 45-1 Ramsey Road, Shirley, NY 11967, USA

reconstitution with preservative. 1 year at -20 to -80 centigrade after reconstitution. For long-term storage, store for up to 2 years at -20 centigrade and 5 years at -80 centigrade after reconstitution.

Shipping Ambient

Reconstitution Reconstitute in 25 µL in sterile PBS containing at least 0.1% protein.

GENE INFORMATION

Gene Name IL6 interleukin 6 [*Mustela putorius furo* (domestic ferret)]

Official Symbol IL6

Synonyms IL6; interleukin 6; HGF; BSF2; IL-6; IFNB2; interleukin-6; interleukin 6 (interferon, beta 2)

Gene ID 101671465

mRNA Refseq NM_001310169

Protein Refseq NP_001297098

UniProt ID A3FBE9

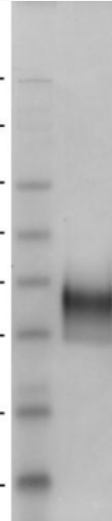
 Tel: 1-631-559-9269 1-516-512-3133

 Email: info@creative-biomart.com  Fax: 1-631-938-8127

 45-1 Ramsey Road, Shirley, NY 11967, USA

SDS-PAGE

118kDa-
98kDa-
62kDa-
49kDa-
38kDa-
28kDa-
14kDa-
6kDa-



Ferret IL-6 (2 μ g) on a Coomassie stained 4-12% SDS-PAGE gel, reducing conditions.

 Tel: 1-631-559-9269 1-516-512-3133

 Email: info@creative-biomart.com  Fax: 1-631-938-8127

 45-1 Ramsey Road, Shirley, NY 11967, USA