

Active Recombinant Human IL6 Protein

Cat. No. IL6-196H Lot. No. (See product label)

SPECIFICATION

Product Overview	Recombinant Human Interleukin-6 is produced by our E. coli expression system and the target gene encoding Val30-Met212 is expressed.
Species	Human
Source	E.coli
ProteinLength	30-212 a.a.
Description	<p>Cytokines of the IL6/GCSF/MGF family are glycoproteins of about 170 to 180 amino acid residues that contain four conserved cysteine residues involved in two disulfide bonds. They have a compact, globular fold (similar to other interleukins), stabilized by the 2 disulfide bonds. One half of the structure is dominated by a 4 alpha-helix bundle with a left-handed twist; the helices are anti-parallel, with 2 overhand connections, which fall into a 2-stranded anti-parallel beta-sheet. The fourth alpha helix is important to the biological activity of the molecule. Interleukin-6 (IL-6) is an important proinflammatory and immunoregulatory cytokine expressed by various cells. Interleukin-6 has been shown to inhibit the growth of early stage and to promote the proliferation of advanced stage melanoma cells in vitro.</p>
Form	Lyophilized from a 0.2 um filtered solution of 20mM HAc-NaAc, 150mM NaCl, pH 5.0.
Bio-activity	Measured in a cell proliferation assay using TF-1 human erythroleukemic cells. The ED50 for this effect is 20-100pg/ml.

 Tel: 1-631-559-9269 1-516-512-3133

 Email: info@creative-biomart.com  Fax: 1-631-938-8127

 45-1 Ramsey Road, Shirley, NY 11967, USA

Molecular Mass	Predicted Molecular Weight: 20.9kDa Apparent Molecular Weight: 20kDa, reducing conditions.
AA Sequence	Pro29-Met212
Endotoxin	Less than 0.1 ng/ug (1 EU/ug).
Purity	>95%
Storage	Lyophilized protein should be stored at < -20 centigrade, though stable at room temperature for 3 weeks. Reconstituted protein solution can be stored at 4-7 centigrade for 2-7 days. Aliquots of reconstituted samples are stable at < -20 centigrade for 3 months.
Reconstitution	Always centrifuge tubes before opening. Do not mix by vortex or pipetting. It is not recommended to reconstitute to a concentration less than 100µg/ml. Dissolve the lyophilized protein in distilled water. Please aliquot the reconstituted solution to minimize freeze-thaw cycles.
Quality Statement	Purity Greater than 95% as determined by reducing SDS-PAGE.
Shipping	The product is shipped at ambient temperature. Upon receipt, store it immediately at the temperature listed below.
GENE INFORMATION	
Gene Name	IL6 interleukin 6 [Homo sapiens (human)]
Official Symbol	IL6
Synonyms	Interleukin-6; IL-6; B-Cell Stimulatory Factor 2; BSF-2; CTL Differentiation Factor;

 Tel: 1-631-559-9269 1-516-512-3133

 Email: info@creative-biomart.com  Fax: 1-631-938-8127

 45-1 Ramsey Road, Shirley, NY 11967, USA

CDF; Hybridoma Growth Factor; Interferon Beta-2; IFN-Beta-2; IFNB2; HGF; HSF; BSF2

Gene ID 3569

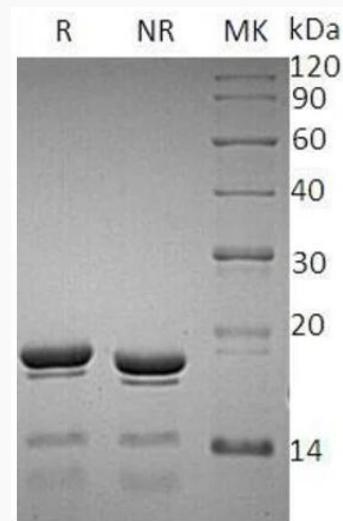
mRNA Refseq NM_001318095.2

Protein Refseq NP_001305024.1

MIM 147620

UniProt ID P05231

SDS-PAGE



 Tel: 1-631-559-9269 1-516-512-3133

 Email: info@creative-biomart.com  Fax: 1-631-938-8127

 45-1 Ramsey Road, Shirley, NY 11967, USA