

Recombinant Active Human IL6 Protein, His-tagged(C-ter)

Cat. No. IL6-208H Lot. No. (See product label)

SPECIFICATION

Product Overview	Recombinant Active Human IL6 Protein with His tag (C-ter) was expressed in E. coli.
Species	Human
Source	E.coli
Description	This gene encodes a cytokine that functions in inflammation and the maturation of B cells. In addition, the encoded protein has been shown to be an endogenous pyrogen capable of inducing fever in people with autoimmune diseases or infections. The protein is primarily produced at sites of acute and chronic inflammation, where it is secreted into the serum and induces a transcriptional inflammatory response through interleukin 6 receptor, alpha. The functioning of this gene is implicated in a wide variety of inflammation-associated disease states, including susceptibility to diabetes mellitus and systemic juvenile rheumatoid arthritis. [provided by RefSeq, Jun 2011]
Form	Powder
Bio-activity	Determined by its ability to induce proliferation in TF-1 cells The ED50 for this effect is <0.5 ng/mL. The specific activity of recombinant human IL-6 is approximately >5 x 10 ⁸ IU/mg. Determined by its ability to induce proliferation in MCF-7 cells. The ED50 for this effect is <4.4 ng/mL.
AA Sequence	MVPPGEDSKDVAAPHRQPLTSSERIDKQIRYILDGISALRKETCNKSNMCESSKEAL AENNLNLPKMAEKDGCQSGFNEETCLVKIITGLLEFEVYLEYLQNRFESSEEQARA VQMSTKVLIQFLQKKAKNLDAITTPDPTTNASLLTKLQAQNQWLQDMTTHLILRSFKE

 Tel: 1-631-559-9269 1-516-512-3133

 Email: info@creative-biomart.com  Fax: 1-631-938-8127

 45-1 Ramsey Road, Shirley, NY 11967, USA

	FLQSSLRALRQM
Endotoxin	Endotoxin level is less than 0.1 EU/μg of the protein, as determined by the LAL test.
Purity	> 98% (by SDS-PAGE)
Applications	SDS-PAGE
Notes	For laboratory research only, not for drug, diagnostic or other use.
Storage	Lyophilized protein should be stored at -20°C. After reconstitution, aliquot and store at -20°C or -80°C for up to one month. Storage in frost free freezers is not recommended. Avoid repeated freeze/thaw cycles. Suggest spin the vial prior to opening.
Storage Buffer	PBS (pH 8.0)
Reconstitution	It is recommended to reconstitute the lyophilized protein in sterile water to a concentration not less than 100 μg/mL and incubate the stock solution for at least 20 min at room temperature to make sure the protein is dissolved completely.
GENE INFORMATION	
Gene Name	IL6 interleukin 6 (interferon, beta 2) [Homo sapiens]
Official Symbol	IL6
Synonyms	IL6; interleukin 6 (interferon, beta 2); IFNB2; interleukin-6; BSF2; HGF; HSF; IL 6; CDF; BSF-2; IFN-beta-2; interferon beta-2; interleukin BSF-2; hybridoma growth factor; CTL differentiation factor; B-cell stimulatory factor 2; B-cell differentiation factor; IL-6;

 Tel: 1-631-559-9269 1-516-512-3133

 Email: info@creative-biomart.com  Fax: 1-631-938-8127

 45-1 Ramsey Road, Shirley, NY 11967, USA

Gene ID 3569

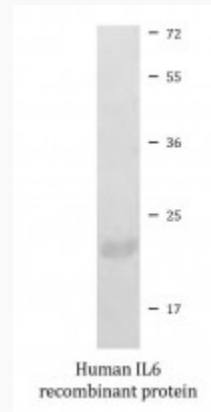
mRNA Refseq NM_000600

Protein Refseq NP_000591

MIM 147620

UniProt ID P05231

SDS-PAGE



 Tel: 1-631-559-9269 1-516-512-3133

 Email: info@creative-biomart.com  Fax: 1-631-938-8127

 45-1 Ramsey Road, Shirley, NY 11967, USA