

Recombinant Active Pig IL6 Protein, His-tagged(C-ter)

Cat. No. IL6-211P Lot. No. (See product label)

SPECIFICATION

Product Overview	Recombinant Active Pig IL6 Protein with His tag (C-ter) was expressed in E. coli.
Species	Pig
Source	E.coli
Description	This gene encodes a cytokine that functions in inflammation and the maturation of B cells. In addition, the encoded protein has been shown to be an endogenous pyrogen capable of inducing fever in people with autoimmune diseases or infections. The protein is primarily produced at sites of acute and chronic inflammation, where it is secreted into the serum and induces a transcriptional inflammatory response through interleukin 6 receptor, alpha. The functioning of this gene is implicated in a wide variety of inflammation-associated disease states, including susceptibility to diabetes mellitus and systemic juvenile rheumatoid arthritis. [provided by RefSeq, Jun 2011]
Form	Powder
Bio-activity	Determined by its ability to induce proliferation in T1165.85.2.1 cells. The ED50 for this effect is < 1.5 ng/mL.
AA Sequence	MGRLEEDAKGDATSDKMLFTSPDKTEELIKYILGKISAMRKEMCEKYKENSKEVL AENNLNLPKMAEKDGCQSGFNQETCLMRITGLVEFQIYLDYLQKEYESNKG NVE AVQISTKALIQTLRQKGKPNPKATTPNPTT NAGLLDKLQSQNEWMKNTKIILIRSLED FLQFSLRAIRIM

 Tel: 1-631-559-9269 1-516-512-3133

 Email: info@creative-biomart.com  Fax: 1-631-938-8127

 45-1 Ramsey Road, Shirley, NY 11967, USA

Endotoxin	Endotoxin level is less than 0.1 EU/μg of the protein, as determined by the LAL test.
Purity	> 98% (by SDS-PAGE)
Applications	SDS-PAGE
Notes	For laboratory research only, not for drug, diagnostic or other use.
Storage	Lyophilized protein should be stored at -20°C. After reconstitution, aliquot and store at -20°C or -80°C for up to one month. Storage in frost free freezers is not recommended. Avoid repeated freeze/thaw cycles. Suggest spin the vial prior to opening.
Storage Buffer	PBS (pH 7.4)
Reconstitution	It is recommended to reconstitute the lyophilized protein in sterile water to a concentration not less than 100 μg/mL and incubate the stock solution for at least 20 min at room temperature to make sure the protein is dissolved completely.

GENE INFORMATION

Gene Name	IL6 interleukin 6 (interferon, beta 2) [<i>Sus scrofa</i>]
Official Symbol	IL6
Synonyms	IL6; interleukin 6 (interferon, beta 2); interleukin-6; IL-6; interleukin-6 protein;
Gene ID	399500
mRNA Refseq	NM_214399

 Tel: 1-631-559-9269 1-516-512-3133

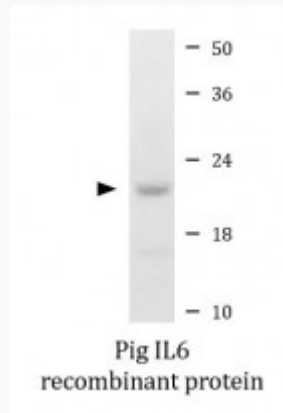
 Email: info@creative-biomart.com  Fax: 1-631-938-8127

 45-1 Ramsey Road, Shirley, NY 11967, USA

Protein Refseq

NP_999564

SDS-PAGE



 Tel: 1-631-559-9269 1-516-512-3133

 Email: info@creative-biomart.com  Fax: 1-631-938-8127

 45-1 Ramsey Road, Shirley, NY 11967, USA