

## Active Recombinant Pig IL6 Protein (Arg31-Met212), C-His tagged, Animal-free, Carrier-free

Cat. No. IL6-213P Lot. No. (See product label)

### SPECIFICATION

<b>Product Overview</b>	Recombinant Pig IL6 Protein (Arg31-Met212) with C-His tag was expressed in E. coli and Animal-free as well as Carrier-free.
<b>Species</b>	Pig
<b>Source</b>	E.coli
<b>ProteinLength</b>	Arg31-Met212
<b>Description</b>	Interleukin-6 (IL-6) is a pleiotropic cytokine which plays fundamental role in the acute phase response, inflammation, bone metabolism, lymphocyte differentiation and cancer progression. Deregulation of IL-6 production was also found in several diseases, including rheumatoid arthritis, Alzheimer's disease, autoimmune deficiency disease and different types of cancer.
<b>Form</b>	Lyophilized
<b>Bio-activity</b>	Measure by its ability to induce proliferation in T1165.85.2.1 cells. The ED50 for this effect is < 1.5 ng/mL.
<b>Molecular Mass</b>	The protein has a calculated MW of 21.9 kDa. The protein migrates as 23 kDa under reducing condition (SDS-PAGE analysis).
<b>Endotoxin</b>	< 0.1 EU/μg of the protein by the LAL method.

 Tel: 1-631-559-9269 1-516-512-3133

 Email: [info@creative-biomart.com](mailto:info@creative-biomart.com)  Fax: 1-631-938-8127

 45-1 Ramsey Road, Shirley, NY 11967, USA

<b>Purity</b>	>98% as determined by SDS-PAGE analysis.
<b>Storage</b>	This product is stable after storage at: -20 centigrade for 12 months in lyophilized state from date of receipt. -20 or -80 centigrade for 1 month under sterile conditions after reconstitution. Avoid repeated freeze/thaw cycles.
<b>Storage Buffer</b>	Lyophilized from a 0.2 µm filtered solution of PBS, pH 7.4.
<b>Reconstitution</b>	It is recommended to reconstitute the lyophilized protein in sterile H2O to a concentration not less than 200 µg/mL and incubate the stock solution for at least 20 min to ensure sufficient re-dissolved.
<b>Shipping</b>	The product is shipped with polar packs. Upon receipt, store it immediately at -20 centigrade or lower for long term storage.

## GENE INFORMATION

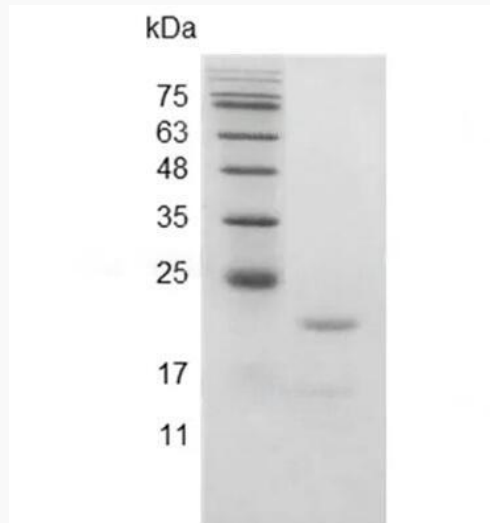
<b>Gene Name</b>	IL6 interleukin 6 (interferon, beta 2) [ <i>Sus scrofa</i> ]
<b>Official Symbol</b>	IL6
<b>Synonyms</b>	IL6; interleukin 6 (interferon, beta 2); interleukin-6; IL-6; interleukin-6 protein;
<b>Gene ID</b>	399500
<b>mRNA Refseq</b>	NM_214399
<b>Protein Refseq</b>	NP_999564
<b>UniProt ID</b>	P26893

 Tel: 1-631-559-9269 1-516-512-3133

 Email: [info@creative-biomart.com](mailto:info@creative-biomart.com)  Fax: 1-631-938-8127

 45-1 Ramsey Road, Shirley, NY 11967, USA

**SDS-PAGE analysis  
of recombinant  
swine IL-6.**



 Tel: 1-631-559-9269 1-516-512-3133

 Email: [info@creative-biomart.com](mailto:info@creative-biomart.com)  Fax: 1-631-938-8127

 45-1 Ramsey Road, Shirley, NY 11967, USA