

# Active Recombinant Human IL6 Protein (Pro29-Met212), GMP Grade, Animal-Free

Cat. No. IL6-24HG Lot. No. (See product label)

## SPECIFICATION

<b>Product Overview</b>	GMP recombinant human IL-6 protein (Pro29-Met212) without tag was expressed in E. coli, produced in an Animal-Free laboratory and manufactured and tested under cGMP guidelines.
<b>Species</b>	Human
<b>Source</b>	E.coli
<b>ProteinLength</b>	Pro29-Met212
<b>Description</b>	This gene encodes a cytokine that functions in inflammation and the maturation of B cells. In addition, the encoded protein has been shown to be an endogenous pyrogen capable of inducing fever in people with autoimmune diseases or infections. The protein is primarily produced at sites of acute and chronic inflammation, where it is secreted into the serum and induces a transcriptional inflammatory response through interleukin 6 receptor, alpha. The functioning of this gene is implicated in a wide variety of inflammation-associated disease states, including susceptibility to diabetes mellitus and systemic juvenile rheumatoid arthritis. Elevated levels of the encoded protein have been found in virus infections, including COVID-19 (disease caused by SARS-CoV-2).
<b>Bio-activity</b>	Measured in a cell proliferation assay using T1165.85.2.1 mouse plasmacytoma cells. The ED50 for this effect is 0.2-0.8 ng/mL.

 Tel: 1-631-559-9269 1-516-512-3133

 Email: [info@creative-biomart.com](mailto:info@creative-biomart.com)  Fax: 1-631-938-8127

 45-1 Ramsey Road, Shirley, NY 11967, USA

The specific activity of Recombinant Human IL-6 is  $>1.0 \times 10^8$  IU/mg, which is calibrated against the human IL-6 WHO International Standard.

**Molecular Mass**

Predicted Molecular Mass: 20.9 kDa  
SDS-PAGE: 20-21 kDa, reducing conditions

**N-terminal Sequence Analysis**

Pro29-Val-Pro-Pro-Gly-Glu-Asp-Ser-Lys-Asp

**Endotoxin**

$<0.10$  EU/  $\mu$ g of the protein by the LAL method.

**Purity**

$>97\%$ , by SDS-PAGE under reducing conditions and visualized by silver stain.

**Storage**

Use a manual defrost freezer and avoid repeated freeze-thaw cycles.  
A minimum of 12 months when stored at  $\leq -20$  centigrade as supplied. Refer to lot specific COA for the Use by Date.  
1 month, 2 to 8 centigrade under sterile conditions after reconstitution.  
3 months,  $\leq -20$  centigrade under sterile conditions after reconstitution.

**Storage Buffer**

Lyophilized from a  $0.2 \mu\text{m}$  filtered solution in PBS and NaCl.

**Reconstitution**

Reconstitute at 100-200  $\mu\text{g/mL}$  in sterile PBS.

**Shipping**

The product is shipped with polar packs.

## GENE INFORMATION

**Gene Name**

IL6 interleukin 6 (interferon, beta 2) [ Homo sapiens ]

**Official Symbol**

IL6

 Tel: 1-631-559-9269 1-516-512-3133

 Email: [info@creative-biomart.com](mailto:info@creative-biomart.com)  Fax: 1-631-938-8127

 45-1 Ramsey Road, Shirley, NY 11967, USA

**Synonyms** IL6; interleukin 6 (interferon, beta 2); IFNB2; interleukin-6; BSF2; HGF; HSF; IL 6; CDF; BSF-2; IFN-beta-2; interferon beta-2; interleukin BSF-2; hybridoma growth factor; CTL differentiation factor; B-cell stimulatory factor 2; B-cell differentiation factor; IL-6;

**Gene ID** [3569](#)

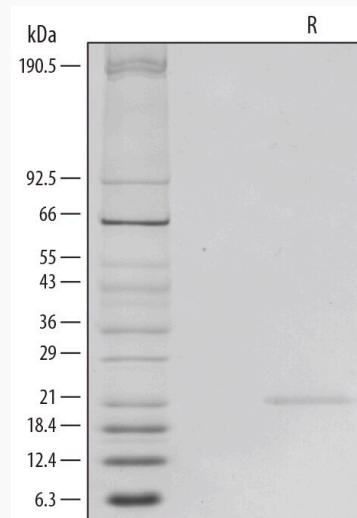
**mRNA Refseq** [NM\\_000600](#)


**Protein Refseq** [NP\\_000591](#)

**MIM** [147620](#)

**UniProt ID** [P05231](#)

**SDS-PAGE**

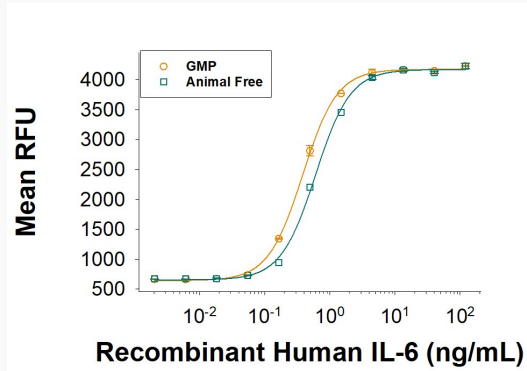


 Tel: 1-631-559-9269 1-516-512-3133

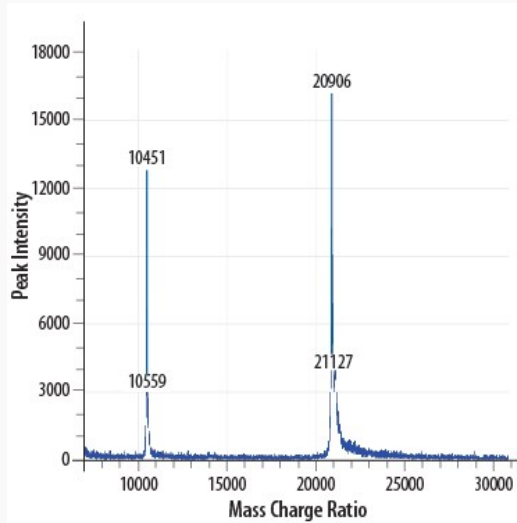
 Email: [info@creative-biomart.com](mailto:info@creative-biomart.com)  Fax: 1-631-938-8127


 45-1 Ramsey Road, Shirley, NY 11967, USA

**Bioactivity**




**Mass Spectrometry**



 Tel: 1-631-559-9269 1-516-512-3133

 Email: [info@creative-biomart.com](mailto:info@creative-biomart.com)  Fax: 1-631-938-8127

 45-1 Ramsey Road, Shirley, NY 11967, USA