

## Recombinant Human IL6 Protein (Val30-Met212), C-mFc and 6xHis-tagged

Cat. No. IL6-251H Lot. No. (See product label)

### SPECIFICATION

**Product Overview**

Recombinant Human IL6 Protein (Val30-Met212) with C-mFc and 6xHis tag was expressed in HEK293.

**Species**

Human

**Source**

HEK293

**ProteinLength**

Val30-Met212

**Description**

This gene encodes a cytokine that functions in inflammation and the maturation of B cells. In addition, the encoded protein has been shown to be an endogenous pyrogen capable of inducing fever in people with autoimmune diseases or infections. The protein is primarily produced at sites of acute and chronic inflammation, where it is secreted into the serum and induces a transcriptional inflammatory response through interleukin 6 receptor, alpha. The functioning of this gene is implicated in a wide variety of inflammation-associated disease states, including susceptibility to diabetes mellitus and systemic juvenile rheumatoid arthritis. Alternative splicing results in multiple transcript variants.

**Form**

Lyophilized

**Molecular Mass**

47.9 kDa

**Purity**

> 95% as determined by SDS-PAGE and Coomassie blue staining.

 Tel: 1-631-559-9269 1-516-512-3133

 Email: [info@creative-biomart.com](mailto:info@creative-biomart.com)  Fax: 1-631-938-8127

 45-1 Ramsey Road, Shirley, NY 11967, USA

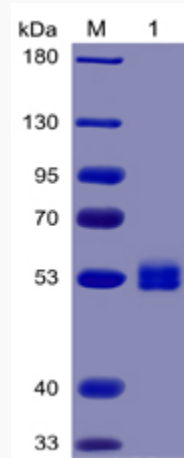
<b>Storage</b>	Store at -80 centigrade for 12 months (Avoid repeated freezing and thawing)
<b>Storage Buffer</b>	Lyophilized from sterile PBS, pH 7.4. Normally 5 % - 39 % trehalose is added as protectants before lyophilization.
<b>GENE INFORMATION</b>	
<b>Gene Name</b>	IL6 interleukin 6 (interferon, beta 2) [ Homo sapiens (human) ]
<b>Official Symbol</b>	IL6
<b>Synonyms</b>	IL6; interleukin 6 (interferon, beta 2); IFNB2; interleukin-6; BSF2; HGF; HSF; IL 6; CDF; BSF-2; IFN-beta-2; interferon beta-2; interleukin BSF-2; hybridoma growth factor; CTL differentiation factor; B-cell stimulatory factor 2; B-cell differentiation factor; IL-6;
<b>Gene ID</b>	3569
<b>mRNA Refseq</b>	NM_00600
<b>Protein Refseq</b>	NP_00591
<b>MIM</b>	147620
<b>UniProt ID</b>	P05231

 Tel: 1-631-559-9269 1-516-512-3133

 Email: [info@creative-biomart.com](mailto:info@creative-biomart.com)  Fax: 1-631-938-8127

 45-1 Ramsey Road, Shirley, NY 11967, USA

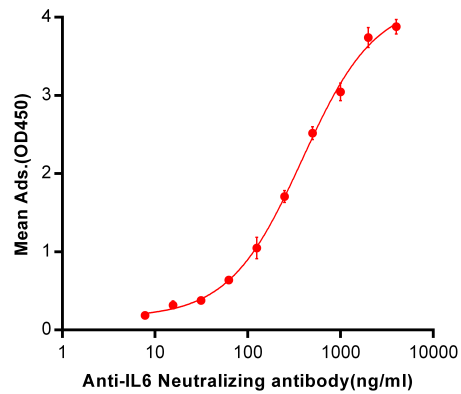
**SDS-PAGE**




**Activity**


**Human IL6, mFc-His Tagged protein ELISA**

0.2 µg of Human IL6, mFc-His Tagged protein per well



 Tel: 1-631-559-9269 1-516-512-3133

 Email: [info@creative-biomart.com](mailto:info@creative-biomart.com)  Fax: 1-631-938-8127

 45-1 Ramsey Road, Shirley, NY 11967, USA