

Recombinant Horse IL6 protein, His-SUMO-tagged

Cat. No. IL6-3219H Lot. No. (See product label)

SPECIFICATION

Product Overview	Recombinant Horse IL6 protein(Thr28~Met208), fused with Two N-terminal Tags, His-tag and SUMO-tag, was expressed in E.coli.
Species	Horse
Source	E.coli
ProteinLength	Thr28~Met208
Form	20mM Tris, 150mM NaCl, pH8.0, containing 1mM EDTA, 1mM DTT, 0.01% SKL, 5% Trehalose and Proclin300.
Molecular Mass	41kDa
Endotoxin	<1.0EU per 1g (determined by the LAL method)
Purity	> 90%
Storage	Avoid repeated freeze/thaw cycles. Store at 2-8°C for one month. Aliquot and store at -80°C for 12 months.
Reconstitution	Reconstitute in 20mM Tris, 150mM NaCl (pH8.0) to a concentration of 0.1-1.0 mg/mL. Do not vortex.

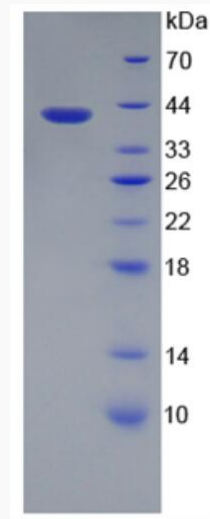
GENE INFORMATION

 Tel: 1-631-559-9269 1-516-512-3133

 Email: info@creative-biomart.com  Fax: 1-631-938-8127

 45-1 Ramsey Road, Shirley, NY 11967, USA

Gene Name	IL6 interleukin 6 (interferon, beta 2) [Equus caballus]
Official Symbol	IL6
Synonyms	IL6; interleukin 6 (interferon, beta 2); interleukin-6; IL-6;
Gene ID	100034196
mRNA Refseq	NM_001082496
Protein Refseq	NP_001075965

SDS-PAGE

 Tel: 1-631-559-9269 1-516-512-3133

 Email: info@creative-biomart.com  Fax: 1-631-938-8127

 45-1 Ramsey Road, Shirley, NY 11967, USA