

## Recombinant Human IL6 protein

Cat. No. IL6-3395H Lot. No. (See product label)

### SPECIFICATION

<b>Product Overview</b>	Recombinant Human IL6 protein(P05231)(Val30-Met212) was expressed in E.coli.
<b>Species</b>	Human
<b>Source</b>	E.coli
<b>ProteinLength</b>	Val30-Met212
<b>Tag</b>	Non
<b>Form</b>	Lyophilized from 0.22µm filtered solution in PBS (pH 7.4). Normally 5% trehalose is added as protectant before lyophilization.
<b>Bio-activity</b>	Immobilized Human IL-6 at 2µg/ml (100µl/Well) on the plate. Dose response curve for Human IL-6 R alpha, hFc Tag with the EC50 6.0ng/ml determined by ELISA.
<b>Molecular Mass</b>	The protein has a predicted 20.8 kDa same as Tris-Bis PAGE result.
<b>Endotoxin</b>	Less than 1EU per µg by the LAL method.
<b>Purity</b>	> 95% as determined by Tris-Bis PAGE; > 90% as determined by HPLC
<b>Storage</b>	Reconstituted protein stable at -80°C for 12 months, 4°C for 1 week. Use a manual defrost freezer and avoid repeated freeze-thaw cycles.

 Tel: 1-631-559-9269 1-516-512-3133

 Email: [info@creative-biomart.com](mailto:info@creative-biomart.com)  Fax: 1-631-938-8127

 45-1 Ramsey Road, Shirley, NY 11967, USA

**Reconstitution** Centrifuge tubes before opening. Reconstituting to a concentration more than 100 µg/ml is recommended. Dissolve the lyophilized protein in distilled water.

## GENE INFORMATION

**Gene Name** [IL6 interleukin 6 \(interferon, beta 2\) \[ Homo sapiens \]](#)

**Official Symbol** [IL6](#)

**Synonyms** IL6; interleukin 6 (interferon, beta 2); IFNB2; interleukin-6; BSF2; HGF; HSF; IL 6; CDF; BSF-2; IFN-beta-2; interferon beta-2; interleukin BSF-2; hybridoma growth factor; CTL differentiation factor; B-cell stimulatory factor 2; B-cell differentiation factor; IL-6;

**Gene ID** [3569](#)

**mRNA Refseq** [NM\\_000600](#)

**Protein Refseq** [NP\\_000591](#)

**MIM** [147620](#)

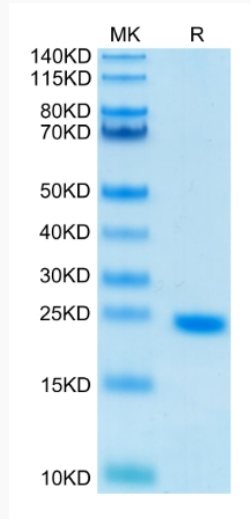
**UniProt ID** [P05231](#)

 Tel: 1-631-559-9269 1-516-512-3133

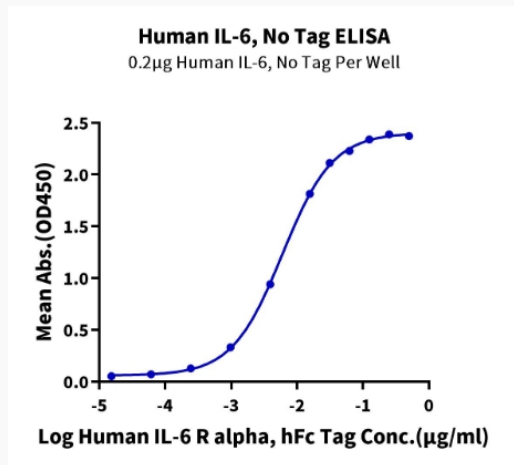
 Email: [info@creative-biomart.com](mailto:info@creative-biomart.com)  Fax: 1-631-938-8127

 45-1 Ramsey Road, Shirley, NY 11967, USA

**Tris-Bis PAGE**



**ELISA Data**



Tel: 1-631-559-9269 1-516-512-3133

Email: [info@creative-biomart.com](mailto:info@creative-biomart.com) Fax: 1-631-938-8127

45-1 Ramsey Road, Shirley, NY 11967, USA