

## Recombinant Dog IL6 protein, rFc-tagged

Cat. No. IL6-4654D Lot. No. (See product label)

### SPECIFICATION

<b>Product Overview</b>	Recombinant Dog IL6 protein(P41323)(Phe21-Met207), fused with N-terminal rFc tag, was expressed in HEK293.
<b>Species</b>	Dog
<b>Source</b>	HEK293
<b>Form</b>	Lyophilized from 0.22 µm filtered solution in PBS, pH 7.4. Normally 5% trehalose and 5% mannitol are added as protectants before lyophilization.
<b>Molecular Mass</b>	48.1 kDa
<b>Endotoxin</b>	<0.1 EU/ug protein, LAL method
<b>Purity</b>	>90 %, SDS-PAGE
<b>Storage</b>	It is recommended that the protein be aliquoted for optimal storage. Avoid repeated freeze-thaw cycles. Until expiry date, -20°C to -80°C as lyophilized proteins. 3 months, -20°C to -80°C under sterile conditions after reconstitution.
<b>Reconstitution</b>	Briefly centrifuge the tube before opening. Reconstitute at 0.1-0.5 mg/mL in sterile water.

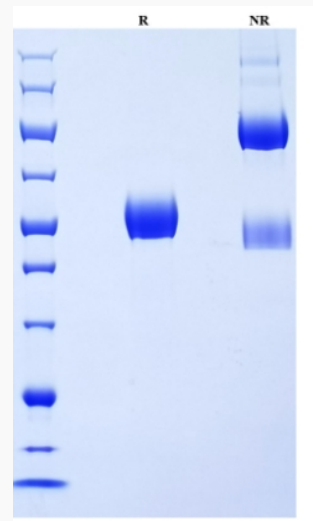
### GENE INFORMATION

 Tel: 1-631-559-9269 1-516-512-3133

 Email: [info@creative-biomart.com](mailto:info@creative-biomart.com)  Fax: 1-631-938-8127

 45-1 Ramsey Road, Shirley, NY 11967, USA

<b>Gene Name</b>	IL6 interleukin 6 (interferon, beta 2) [ <i>Canis lupus familiaris</i> ]
<b>Official Symbol</b>	IL6
<b>Synonyms</b>	IL6; interleukin 6 (interferon, beta 2); interleukin-6; IL-6;
<b>Gene ID</b>	403985
<b>mRNA Refseq</b>	NM_001003301
<b>Protein Refseq</b>	NP_001003301

**SDS-PAGE**

 Tel: 1-631-559-9269 1-516-512-3133

 Email: [info@creative-biomart.com](mailto:info@creative-biomart.com)  Fax: 1-631-938-8127

 45-1 Ramsey Road, Shirley, NY 11967, USA