

Active Recombinant Dog IL6 Protein, His-tagged

Cat. No. IL6-498D Lot. No. (See product label)

SPECIFICATION

Product Overview Recombinant Dog IL6 protein(Ala18~Met207), fused with N-terminal His tag, was expressed in HEK293.

Species Dog

Source HEK293

ProteinLength Ala18-Met207

Tag N-His

Form PBS, pH7.4, containing 5% Trehalose.

Bio-activity

Interleukin 6 (IL-6) is an interleukin that acts as both a pro-inflammatory cytokine and an anti-inflammatory myokine. Interleukin 6 is secreted by T cells and macrophages to stimulate immune response and also plays a role in fighting infection. It supports the growth of B cells and is antagonistic to regulatory T cells. To test the effect of IL6 on cell proliferation, TF-1 cells were seeded into triplicate wells of 96-well plates at a density of 8,000 cells/well with 2% serum standard 1640 which contains various concentrations of recombinant dog IL6. After incubated for 3 days, cells were observed by inverted microscope and cell proliferation was measured by Cell Counting Kit-8(CCK-8). Briefly, 10 μ l of CCK-8 solution was added to each well of the plate, then the absorbance at 450 nm was measured using a microplate reader after incubating the plate for 1-4 hours at 37 °C.

 Tel: 1-631-559-9269 1-516-512-3133

 Email: info@creative-biomart.com  Fax: 1-631-938-8127

 45-1 Ramsey Road, Shirley, NY 11967, USA

Molecular Mass	33kDa
Endotoxin	<1.0EU per 1µg (determined by the LAL method).
Purity	>90%
Storage	Avoid repeated freeze/thaw cycles. Store at 2-8°C for one month. Aliquot and store at -80°C for 12 months.
Reconstitution	Reconstitute in 10mM PBS (pH7.4) to a concentration of 0.1-1.0 mg/mL. Do not vortex.

GENE INFORMATION

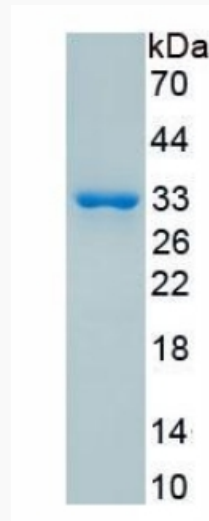
Gene Name	IL6 interleukin 6 (interferon, beta 2) [<i>Canis lupus familiaris</i>]
Official Symbol	IL6
Synonyms	IL6; interleukin 6 (interferon, beta 2); interleukin-6; IL-6;
Gene ID	403985
mRNA Refseq	NM_001003301
Protein Refseq	NP_001003301

 Tel: 1-631-559-9269 1-516-512-3133

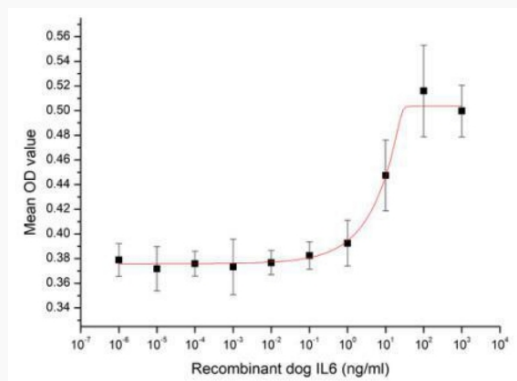
 Email: info@creative-biomart.com  Fax: 1-631-938-8127

 45-1 Ramsey Road, Shirley, NY 11967, USA

SDS-PAGE



Activity



 Tel: 1-631-559-9269 1-516-512-3133

 Email: info@creative-biomart.com  Fax: 1-631-938-8127

 45-1 Ramsey Road, Shirley, NY 11967, USA