

Recombinant Sheep IL6 protein, His-tagged

Cat. No. IL6-5451S Lot. No. (See product label)

SPECIFICATION

| | |
|-------------------------|---|
| Product Overview | Recombinant Sheep IL6 protein(P29455)(30-208aa), fused to N-terminal His tag, was expressed in Yeast. |
| Species | Sheep |
| Source | Yeast |
| ProteinLength | 30-208aa |
| Form | If the delivery form is liquid, the default storage buffer is Tris/PBS-based buffer, 5%-50% glycerol. If the delivery form is lyophilized powder, the buffer before lyophilization is Tris/PBS-based buffer, 6% Trehalose, pH 8.0. |
| Molecular Mass | 22.5 kDa |
| Purity | Greater than 90% as determined by SDS-PAGE. |
| Storage | Store at -20°C/-80°C upon receipt, aliquoting is necessary for mutiple use. Avoid repeated freeze-thaw cycles. |
| Reconstitution | Please reconstitute protein in deionized sterile water to a concentration of 0.1-1.0 mg/mL. We recommend to add 5-50% of glycerol (final concentration) and aliquot for long-term storage at -20°C/-80°C. Our default final concentration of glycerol is 50%. |

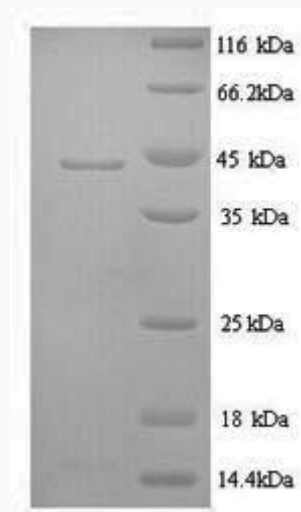
GENE INFORMATION

 Tel: 1-631-559-9269 1-516-512-3133

 Email: info@creative-biomart.com  Fax: 1-631-938-8127

 45-1 Ramsey Road, Shirley, NY 11967, USA

| | |
|------------------------|---|
| Gene Name | IL6 interleukin 6 (interferon, beta 2) [<i>Ovis aries</i>] |
| Official Symbol | IL6 |
| Synonyms | IL6; interleukin 6 (interferon, beta 2); interleukin-6; IL-6; |
| Gene ID | 443406 |
| mRNA Refseq | NM_001009392 |
| Protein Refseq | NP_001009392 |

SDS-PAGE

 Tel: 1-631-559-9269 1-516-512-3133

 Email: info@creative-biomart.com  Fax: 1-631-938-8127

 45-1 Ramsey Road, Shirley, NY 11967, USA