

Recombinant Human IL6 protein, His-tagged

Cat. No. IL6-6018H Lot. No. (See product label)

SPECIFICATION

Product Overview	Recombinant Human IL6 protein(1-212 aa), fused with N-terminal His tag, was expressed in E. coli.
ProteinLength	1-212 aa
Tag	N-His
Form	The purified protein was Lyophilized from sterile PBS (58mM Na ₂ HPO ₄ , 17mM NaH ₂ PO ₄ , 68mM NaCl, pH7.4). 5 % trehalose and 5 % mannitol are added as protectant before lyophilization.
Purity	85%, by SDS-PAGE with Coomassie Brilliant Blue staining.
Storage	Short-term storage: Store at 2-8°C for (1-2 weeks). Long-term storage: Aliquot and store at -20°C to -80°C for up to 3 months, reconstitution with sterile water and addition of an equal volume of glycerol. Avoid repeat freeze-thaw cycles.
Reconstitution	Reconstitute at 0.25 µg/µl in 200 µl sterile water for short-term storage. After reconstitution with sterile water, if glycerol has no effect on subsequent experiments, it is recommended to add an equal volume of glycerol for long-term storage.
AA Sequence	MNSFSTSAFGPVAFSLGLLLVLPAAFPAPVPPGEDSKDVAAPHRQPLTSSERIDKQI RYILDGISALRKETCNKSNMCESSKEALAENNLNLPKMAEKDGCQSGFNEETCLVK IITGLLEFEVYLEYLQNRFESSEEQARAVQMSTKVLIQFLQKKAKNLDAITTPDPTTNA SLLTKLQAQNQWLQDMTTHLILRSFKEFLQSSLRALRQM

 Tel: 1-631-559-9269 1-516-512-3133

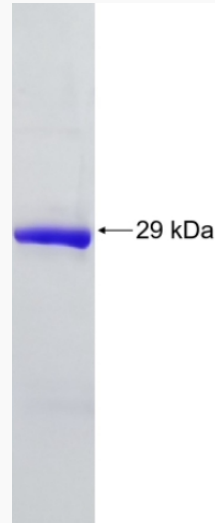
 Email: info@creative-biomart.com  Fax: 1-631-938-8127

 45-1 Ramsey Road, Shirley, NY 11967, USA

GENE INFORMATION**Gene Name** IL6 interleukin 6 (interferon, beta 2) [Homo sapiens]**Official Symbol** IL6**Synonyms** IL6; interleukin 6 (interferon, beta 2); IFNB2; interleukin-6; BSF2; HGF; HSF; IL 6; CDF; BSF-2; IFN-beta-2; interferon beta-2; interleukin BSF-2; hybridoma growth factor; CTL differentiation factor; B-cell stimulatory factor 2; B-cell differentiation factor; IL-6;**Gene ID** 3569**mRNA Refseq** NM_000600**Protein Refseq** NP_000591**MIM** 147620**UniProt ID** P05231 Tel: 1-631-559-9269 1-516-512-3133 Email: info@creative-biomart.com  Fax: 1-631-938-8127 45-1 Ramsey Road, Shirley, NY 11967, USA



SDS-PAGE



Tel: 1-631-559-9269 1-516-512-3133

Email: info@creative-biomart.com Fax: 1-631-938-8127

45-1 Ramsey Road, Shirley, NY 11967, USA