

## Recombinant Human IL6 Protein

Cat. No. IL6-61H Lot. No. (See product label)

### SPECIFICATION

<b>Product Overview</b>	Recombinant Human Interleukin-6 is produced by our E.coli expression system and the target gene encoding Val30-Met212 is expressed.
<b>Species</b>	Human
<b>Source</b>	E.coli
<b>ProteinLength</b>	-6 a.a.
<b>Description</b>	Interleukin-6 (IL-6) is a multifunctional $\alpha$ -helical cytokine that regulates cell growth and differentiation of various tissues. IL-6 is secreted by several cell types including T cells and macrophages. IL-6 plays a critical role in the immune response and acute phase reactions. IL-6 is also important in hematopoiesis, bone metabolism, and cancer progression, and has been identified as an essential role in directing the transition from innate to acquired immunity. IL-6 has been also shown to inhibit the growth of early stage and to promote the proliferation of advanced-stage melanoma cells in vitro.
<b>Form</b>	Lyophilized from a 0.2 um filtered solution of PBS, pH7.4.
<b>Molecular Mass</b>	Predicted Molecular Weight: 21.1kDa Apparent Molecular Weight: 18.4-25kDa, reducing conditions.
<b>AA Sequence</b>	Val30-Met212

 Tel: 1-631-559-9269 1-516-512-3133

 Email: [info@creative-biomart.com](mailto:info@creative-biomart.com)  Fax: 1-631-938-8127

 45-1 Ramsey Road, Shirley, NY 11967, USA

<b>Endotoxin</b>	Less than 1 EU/ug.
<b>Purity</b>	>90%
<b>Storage</b>	<p>Lyophilized protein should be stored at &lt; -20 centigrade, though stable at room temperature for 3 weeks.</p> <p>Reconstituted protein solution can be stored at 4-7 centigrade for 2-7 days. Aliquots of reconstituted samples are stable at &lt; -20 centigrade for 3 months.</p> <p>Always centrifuge tubes before opening. Do not mix by vortex or pipetting.</p>
<b>Reconstitution</b>	<p>It is not recommended to reconstitute to a concentration less than 100µg/ml.</p> <p>Dissolve the lyophilized protein in distilled water.</p> <p>Please aliquot the reconstituted solution to minimize freeze-thaw cycles.</p>
<b>Quality Statement</b>	Purity: greater than 90% as determined by reducing SDS-PAGE.
<b>Shipping</b>	<p>The product is shipped at ambient temperature.</p> <p>Upon receipt, store it immediately at the temperature listed below.</p>

## GENE INFORMATION

<b>Gene Name</b>	IL6 interleukin 6 [ Homo sapiens (human) ]
<b>Official Symbol</b>	IL6
<b>Synonyms</b>	Interleukin-6; IL-6; B-Cell Stimulatory Factor 2; BSF-2; CTL Differentiation Factor; CDF; Hybridoma Growth Factor; Interferon Beta-2; IFN-Beta-2; IL6; IFNB2
<b>Gene ID</b>	3569
<b>mRNA Refseq</b>	NM_000600.5

 Tel: 1-631-559-9269 1-516-512-3133

 Email: [info@creative-biomart.com](mailto:info@creative-biomart.com)  Fax: 1-631-938-8127

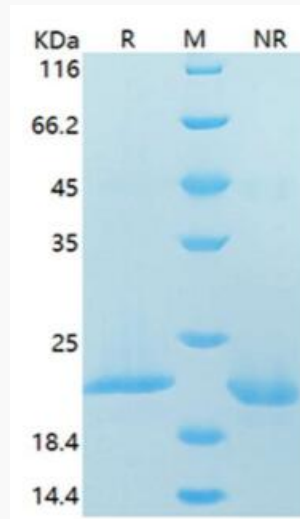
 45-1 Ramsey Road, Shirley, NY 11967, USA

**Protein Refseq** NP\_000591.1

**MIM** 147620

**UniProt ID** P05231

**SDS-PAGE**



SDS-PAGE Result of Final sample (12% gel).

 Tel: 1-631-559-9269 1-516-512-3133

 Email: [info@creative-biomart.com](mailto:info@creative-biomart.com)  Fax: 1-631-938-8127

 45-1 Ramsey Road, Shirley, NY 11967, USA