

Recombinant Dog IL6 Protein, His-tagged

Cat. No. IL6-654D Lot. No. (See product label)

SPECIFICATION

Product Overview	Recombinant Dog IL6 Protein(21-207 aa) is expressed from HEK293 with His tag at the N-Terminus.
Species	Dog
Source	HEK293
Form	PBS, pH7.4, containing 5% Trehalose.
Molecular Mass	22.6kDa
Endotoxin	<1.0EU per 1µg (determined by the LAL method).
Purity	>95%
Storage	Avoid repeated freeze/thaw cycles. Store at 2-8°C for one month. Aliquot and store at -80°C for 12 month.
Reconstitution	Reconstitute in 10mM PBS (pH7.4) to a concentration of 0.1-1.0 mg/mL. Do not vortex.

GENE INFORMATION

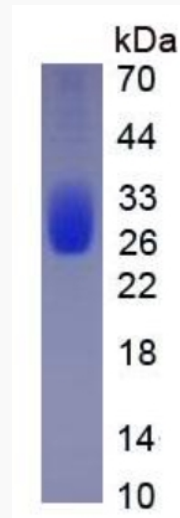
Gene Name IL6 interleukin 6 (interferon, beta 2) [*Canis lupus familiaris*]

 Tel: 1-631-559-9269 1-516-512-3133

 Email: info@creative-biomart.com  Fax: 1-631-938-8127

 45-1 Ramsey Road, Shirley, NY 11967, USA

Official Symbol	IL6
Synonyms	IL6; interleukin 6 (interferon, beta 2); interleukin-6; IL-6;
Gene ID	403985
mRNA Refseq	NM_001003301
Protein Refseq	NP_001003301

SDS-PAGE

 Tel: 1-631-559-9269 1-516-512-3133

 Email: info@creative-biomart.com  Fax: 1-631-938-8127

 45-1 Ramsey Road, Shirley, NY 11967, USA