

## Recombinant Human IL6R protein, hFc-tagged

**Cat. No.** IL6R-0187H    **Lot. No.** (See product label)

### SPECIFICATION

|                         |   |
|-------------------------|---|
| <b>Product Overview</b> | Recombinant Human IL6R protein(P08887-1)(Leu20-Pro365), fused with C-terminal hFc tag, was expressed in HEK293.   |
| <b>Species</b>          | Human   |
| <b>Source</b>           | HEK293  |
| <b>ProteinLength</b>    | Leu20-Pro365  |
| <b>Tag</b>              | C-hFc   |
| <b>Form</b>             | Lyophilized from 0.22µm filtered solution in PBS (pH 7.4). Normally 5% trehalose is added as protectant before lyophilization.                              |
| <b>Bio-activity</b>     | Immobilized Human IL-6 at 2ug/ml (100ul/Well) on the plate. Dose response curve for Human IL-6 R alpha, hFc Tag with the EC50 6.0ng/ml determined by ELISA. |
| <b>Molecular Mass</b>   | The protein has a predicted MW of 65.3 kDa. Due to glycosylation, the protein migrates to 85-110 kDa based on Tris-Bis PAGE result.                         |
| <b>Endotoxin</b>        | Less than 1EU per µg by the LAL method.   |
| <b>Purity</b>           | > 95% as determined by Tris-Bis PAGE;> 95% as determined by HPLC  |
| <b>Storage</b>          | Reconstituted protein stable at -80°C for 12 months, 4°C for 1 week. Use a manual   |

 Tel: 1-631-559-9269    1-516-512-3133

 Email: [info@creative-biomart.com](mailto:info@creative-biomart.com)     Fax: 1-631-938-8127

 45-1 Ramsey Road, Shirley, NY 11967, USA

defrost freezer and avoid repeated freeze-thaw cycles.

**Reconstitution**

Centrifuge tubes before opening. Reconstituting to a concentration more than 100 µg/ml is recommended. Dissolve the lyophilized protein in distilled water.

**GENE INFORMATION****Gene Name**

IL6R interleukin 6 receptor [ Homo sapiens ]

**Official Symbol**

IL6R

**Synonyms**

IL6R; interleukin 6 receptor; interleukin-6 receptor subunit alpha; CD126; IL-6R 1; CD126 antigen; membrane glycoprotein 80; IL-6 receptor subunit alpha; gp80; IL6RA; IL-6RA; IL-6R-1; MGC104991;

**Gene ID**

3570

**mRNA Refseq**

NM\_000565

**Protein Refseq**

NP\_000556

**MIM**

147880

**UniProt ID**

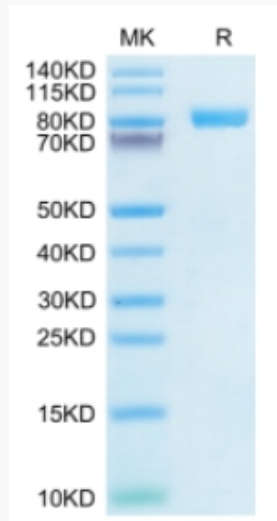
P08887

 Tel: 1-631-559-9269 1-516-512-3133

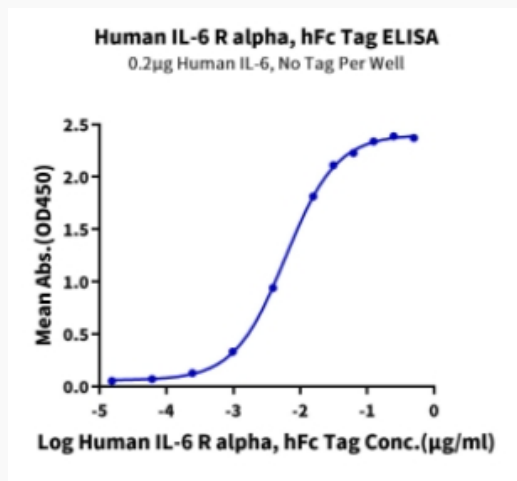
 Email: [info@creative-biomart.com](mailto:info@creative-biomart.com)  Fax: 1-631-938-8127

 45-1 Ramsey Road, Shirley, NY 11967, USA

**Tris-Bis PAGE**



**ELISA Data**



 Tel: 1-631-559-9269 1-516-512-3133

 Email: [info@creative-biomart.com](mailto:info@creative-biomart.com)  Fax: 1-631-938-8127

 45-1 Ramsey Road, Shirley, NY 11967, USA