

Recombinant Human IL6R Protein (Met1-Pro365), C-His tagged

Cat. No. IL6R-1593H Lot. No. (See product label)

SPECIFICATION

Product Overview	Recombinant human IL6R (Met1-Pro365) fused with the C-terminal His tag was expressed in Mammalian cells.
Species	Human
Source	Mammalian Cells
ProteinLength	Met1-Pro365
Form	Lyophilized powder/frozen liquid
Molecular Mass	39.44 kDa
Purity	>90% as determined by SDS-PAGE.
Notes	For research use only.
Storage	Use a manual defrost freezer and avoid repeated freeze thaw cycles. Store at 2 to 8 centigrade for one week. Store at -20 to -80 centigrade for twelve months from the date of receipt.
Storage Buffer	Supplied as solution form in 50 mM Tris-HCl, pH 7.5, 150 mM NaCl or lyophilized from 50 mM Tris-HCl, pH 7.5, 150 mM NaCl.
Reconstitution	Reconstitute in sterile water for a stock solution.

 Tel: 1-631-559-9269 1-516-512-3133

 Email: info@creative-biomart.com  Fax: 1-631-938-8127

 45-1 Ramsey Road, Shirley, NY 11967, USA

Shipping

They are shipped out with dry ice/blue ice unless customers require otherwise.

GENE INFORMATION
Gene Name

IL6R interleukin 6 receptor [Homo sapiens (human)]

Official Symbol

IL6R

Synonyms

IL6R; interleukin 6 receptor; interleukin-6 receptor subunit alpha; CD126; IL-6R 1; CD126 antigen; membrane glycoprotein 80; IL-6 receptor subunit alpha; gp80; IL6RA; IL-6RA; IL-6R-1; MGC104991;

Gene ID

3570

mRNA Refseq

NM_000565

Protein Refseq

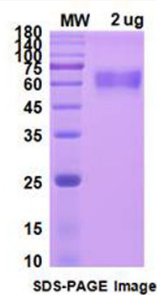
NP_000556

MIM

147880

UniProt ID

P08887

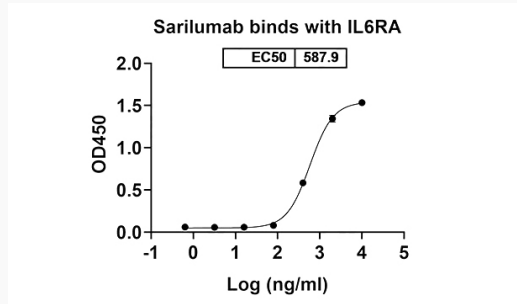
SDS-PAGE


Tel: 1-631-559-9269 1-516-512-3133

Email: info@creative-biomart.com Fax: 1-631-938-8127

45-1 Ramsey Road, Shirley, NY 11967, USA

Activity



 Tel: 1-631-559-9269 1-516-512-3133

 Email: info@creative-biomart.com  Fax: 1-631-938-8127

 45-1 Ramsey Road, Shirley, NY 11967, USA