

Recombinant Human IL6RA protein, Fc-tagged

Cat. No. IL6RA-345H Lot. No. (See product label)

SPECIFICATION

Product Overview Recombinant Human IL6RA protein (Leu20-Pro365), fused to human IgG1 Fc tag at C-terminus, was expressed in human 293 cells (HEK293).

Species Human

Source HEK293

ProteinLength 346

Description

Interleukin 6 receptor (IL6R) is also known as CD126 (Cluster of Differentiation 126), is a potent pleiotropic cytokine that regulates cell growth and differentiation of various tissues, and is known particularly for its role in the immune response and acute phase reactions. IL6R is a protein complex consisting of a IL-6 receptor subunit (IL6R) and interleukin 6 signal transducer Glycoprotein 130. IL6R also denotes the human gene encoding this subunit. Alternatively spliced transcript variants encoding distinct isoforms have been reported. IL6R subunit also shared by many other cytokines. The soluble form of IL6R arises from proteolytic cleavage of membrane-bound IL6R α , and acts agonistically by making the IL6 ligand accessible to the signal transducer gp130. Dysregulated production of IL6 and IL6R are implicated in the pathogenesis of several inflammatory diseases and malignancies such as multiple myeloma, rheumatoid arthritis, or osteoporosis, and it has been reported that a humanized anti-IL6R monoclonal antibody is a promising agent applicable to the therapeutic approach for IL6 driven diseases. Interleukin-6 receptor has been shown to interact with Interleukin 6 and Ciliary neurotrophic factor.

 Tel: 1-631-559-9269 1-516-512-3133

 Email: info@creative-biomart.com  Fax: 1-631-938-8127

 45-1 Ramsey Road, Shirley, NY 11967, USA

Form	Lyophilized from 0.22 um filtered solution in Tris with Glycine, Arginine and NaCl, pH7.5, 10% trehalose.
Molecular Mass	The protein has a calculated MW of 65.0 kDa. The protein migrates as 70-90 kDa under reducing (R) condition (SDS-PAGE) due to glycosylation.
Endotoxin	Less than 1.0 EU per ug by the LAL method.
Purity	>95% as determined by SDS-PAGE.
Storage	<p>For long term storage, the product should be stored at lyophilized state at -20 centigrade or lower.</p> <p>Please avoid repeated freeze-thaw cycles.</p> <p>This product is stable after storage at:</p> <ul style="list-style-type: none"> -20 centigrade to -70 centigrade for 12 months in lyophilized state; -70 centigrade for 3 months under sterile conditions after reconstitution.
Reconstitution	It is recommended that sterile water be added to the vial to prepare a stock solution of 0.2 ug/ul. Centrifuge the vial at 4°C before opening to recover the entire contents.

GENE INFORMATION

Gene Name	IL6RA
Official Symbol	IL6RA
Synonyms	IL6Q; gp80; CD126; IL6RA; IL6RQ; IL-6RA; IL-6R-1
Gene ID	3570
mRNA Refseq	NM_000565.4

 Tel: 1-631-559-9269 1-516-512-3133

 Email: info@creative-biomart.com  Fax: 1-631-938-8127

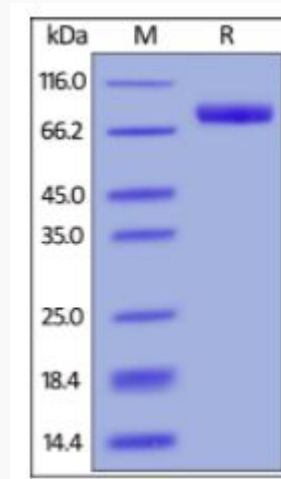
 45-1 Ramsey Road, Shirley, NY 11967, USA

Protein Refseq NP_000556.1

MIM 147880

UniProt ID P08887

SDS-PAGE of IL6RA-345H



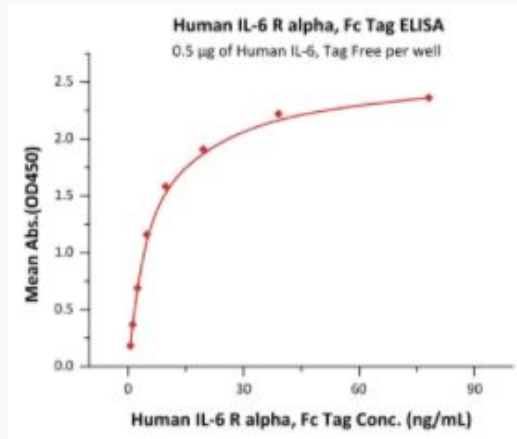
Human IL6R alpha, Fc Tag on SDS-PAGE under reducing (R) condition. The gel was stained overnight with Coomassie Blue. The purity of the protein is greater than 95%.

Tel: 1-631-559-9269 1-516-512-3133

Email: info@creative-biomart.com Fax: 1-631-938-8127

45-1 Ramsey Road, Shirley, NY 11967, USA

**Bioactivity-ELISA of
IL6RA-345H**



Immobilized Human IL-6, Tag Free at 5 µg/mL (100 µL/well) can bind Human IL-6 R alpha, Fc Tag with a linear range of 1-20 ng/mL (QC tested).

 Tel: 1-631-559-9269 1-516-512-3133

 Email: info@creative-biomart.com  Fax: 1-631-938-8127

 45-1 Ramsey Road, Shirley, NY 11967, USA