

Recombinant Human IL6ST protein

Cat. No. IL6ST-0298H Lot. No. (See product label)

SPECIFICATION

Product Overview	Recombinant Human IL6ST protein(NP_002175.2)(Met1-Ile618) was expressed in HEK293 with six amino acids (ENLYFQ) at the C-terminus.
Species	Human
Source	HEK293
ProteinLength	1-618 aa
Form	Lyophilized from sterile PBS, pH 7.4.
Molecular Mass	The recombinant human IL6RB consists of 603 amino acids and predicts a molecular mass of 68.6 KDa. It migrates as an approximately 69-99 KDa band in SDS-PAGE under reducing conditions due to glycosylation.
Endotoxin	< 1.0 EU per µg of the protein as determined by the LAL method.
Purity	> 90 % as determined by SDS-PAGE
Storage	Store it under sterile conditions at -20°C to -80°C upon receiving. Recommend to aliquot the protein into smaller quantities for optimal storage. Avoid repeated freeze-thaw cycles.
Reconstitution	It is recommended that sterile water be added to the vial to prepare a stock solution of 0.2 ug/ul. Centrifuge the vial at 4°C before opening to recover the entire contents.

 Tel: 1-631-559-9269 1-516-512-3133

 Email: info@creative-biomart.com  Fax: 1-631-938-8127

 45-1 Ramsey Road, Shirley, NY 11967, USA

protein Refseq-Weblink http://www.ncbi.nlm.nih.gov/protein/NP_001177910.1

Unit ID P40189

Unit ID-Weblink <http://www.uniprot.org/uniprot/P40189>

GENE INFORMATION

Gene Name [IL6ST interleukin 6 signal transducer \(gp130, oncostatin M receptor\) \[Homo sapiens \]](#)

Official Symbol [IL6ST](#)

Synonyms IL6ST; interleukin 6 signal transducer (gp130, oncostatin M receptor); interleukin-6 receptor subunit beta; CD130; GP130; CD130 antigen; IL-6R subunit beta; membrane glycoprotein 130; IL-6 receptor subunit beta; membrane glycoprotein gp130; interleukin receptor beta chain; oncostatin-M receptor subunit alpha; gp130 of the rheumatoid arthritis antigenic peptide-bearing soluble form; CDW130; IL-6RB; DKFZp564F053;

Gene ID [3572](#)

mRNA Refseq [NM_001190981](#)

protein Refseq [NP_001177910](#)

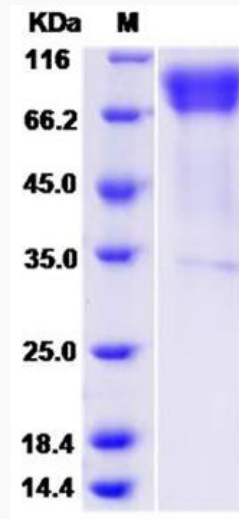
MIM [600694](#)

 Tel: 1-631-559-9269 1-516-512-3133

 Email: info@creative-biomart.com  Fax: 1-631-938-8127

 45-1 Ramsey Road, Shirley, NY 11967, USA

SDS-PAGE



 Tel: 1-631-559-9269 1-516-512-3133

 Email: info@creative-biomart.com  Fax: 1-631-938-8127

 45-1 Ramsey Road, Shirley, NY 11967, USA