

Recombinant Human IL6ST Protein, GST-tagged

Cat. No. IL6ST-5171H Lot. No. (See product label)

SPECIFICATION

Product Overview	Human IL6ST partial ORF (NP_002175, 23 a.a. - 122 a.a.) recombinant protein with GST-tag at N-terminal.
Species	Human
Source	Wheat Germ
Description	The protein encoded by this gene is a signal transducer shared by many cytokines, including interleukin 6 (IL6), ciliary neurotrophic factor (CNTF), leukemia inhibitory factor (LIF), and oncostatin M (OSM). This protein functions as a part of the cytokine receptor complex. The activation of this protein is dependent upon the binding of cytokines to their receptors. vIL6, a protein related to IL6 and encoded by the Kaposi sarcoma-associated herpesvirus, can bypass the interleukin 6 receptor (IL6R) and directly activate this protein. Knockout studies in mice suggested a critical role of the gene encoding this protein in regulating myocyte apoptosis. Alternatively spliced transcript variants encoding distinct isoforms have been described. [provided by RefSeq]
Molecular Mass	36.74 kDa
AA Sequence	ELLDPCGYISPESPVVQLHSNFTAVCVLKEKCMDYFHVNANYIVWKTNHFTIPKEQY TIINRTASSVTFTDIASLNIQLTCNILTFGQLEQNVYGITIIS
Applications	Enzyme-linked Immunoabsorbent Assay Western Blot (Recombinant protein)

 Tel: 1-631-559-9269 1-516-512-3133

 Email: info@creative-biomart.com  Fax: 1-631-938-8127

 45-1 Ramsey Road, Shirley, NY 11967, USA

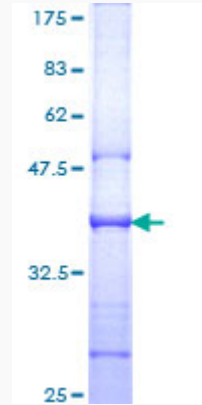
	Antibody Production Protein Array
Notes	Best use within three months from the date of receipt of this protein.
Storage	Store at -80 centigrade. Aliquot to avoid repeated freezing and thawing.
Storage Buffer	50 mM Tris-HCl, 10 mM reduced Glutathione, pH=8.0 in the elution buffer.
GENE INFORMATION	
Gene Name	IL6ST interleukin 6 signal transducer (gp130, oncostatin M receptor) [Homo sapiens]
Official Symbol	IL6ST
Synonyms	IL6ST; interleukin 6 signal transducer (gp130, oncostatin M receptor); interleukin-6 receptor subunit beta; CD130; GP130; CD130 antigen; IL-6R subunit beta; membrane glycoprotein 130; IL-6 receptor subunit beta; membrane glycoprotein gp130; interleukin receptor beta chain; oncostatin-M receptor subunit alpha; gp130 of the rheumatoid arthritis antigenic peptide-bearing soluble form; CDW130; IL-6RB; DKFZp564F053;
Gene ID	3572
mRNA Refseq	NM_001190981
Protein Refseq	NP_001177910
MIM	600694
UniProt ID	P40189

 Tel: 1-631-559-9269 1-516-512-3133

 Email: info@creative-biomart.com  Fax: 1-631-938-8127

 45-1 Ramsey Road, Shirley, NY 11967, USA

**Quality Control
Testing**



12.5% SDS-PAGE Stained with Coomassie Blue

 Tel: 1-631-559-9269 1-516-512-3133

 Email: info@creative-biomart.com  Fax: 1-631-938-8127

 45-1 Ramsey Road, Shirley, NY 11967, USA