

Recombinant Human IL7R protein, hFc-tagged

Cat. No. IL7R-129H **Lot. No.** (See product label)

SPECIFICATION

Product Overview	Recombinant Human IL7R protein(P16871-1)(Glu21-Gly236), fused with C-terminal hFc tag, was expressed in HEK293.
Species	Human
Source	HEK293
ProteinLength	Glu21-Gly236
Tag	C-hFc
Form	Lyophilized from 0.22µm filtered solution in PBS (pH 7.4). Normally 5% trehalose is added as protectant before lyophilization.
Bio-activity	Immobilized Human IL-7 at 2ug/ml (100ul/Well) on the plate. Dose response curve for Human IL-7R alpha, hFc Tag with the EC50 of 16.2ng/ml determined by ELISA (QC tested).
Molecular Mass	The protein has a predicted MW of 51.6 kDa. Due to glycosylation, the protein migrates to 65-75 kDa based on Tris-Bis PAGE result.
Endotoxin	Less than 1EU per µg by the LAL method.
Purity	> 95% as determined by Tris-Bis PAGE;> 95% as determined by HPLC

 Tel: 1-631-559-9269 1-516-512-3133

 Email: info@creative-biomart.com  Fax: 1-631-938-8127

 45-1 Ramsey Road, Shirley, NY 11967, USA

Storage	Reconstituted protein stable at -80°C for 12 months, 4°C for 1 week. Use a manual defrost freezer and avoid repeated freeze-thaw cycles.
Reconstitution	Centrifuge tubes before opening. Reconstituting to a concentration more than 100 µg/ml is recommended. Dissolve the lyophilized protein in distilled water.
GENE INFORMATION	
Gene Name	IL7R interleukin 7 receptor [Homo sapiens]
Official Symbol	IL7R
Synonyms	IL7R; interleukin 7 receptor; interleukin-7 receptor subunit alpha; CD127; IL-7RA; CD127 antigen; IL-7R subunit alpha; IL-7 receptor subunit alpha; interleukin 7 receptor alpha chain; interleukin 7 receptor isoform H5-6; ILRA; IL7RA; CDW127; IL-7R-alpha;
Gene ID	3575
mRNA Refseq	NM_002185
Protein Refseq	NP_002176
MIM	146661
UniProt ID	P16871

 Tel: 1-631-559-9269 1-516-512-3133

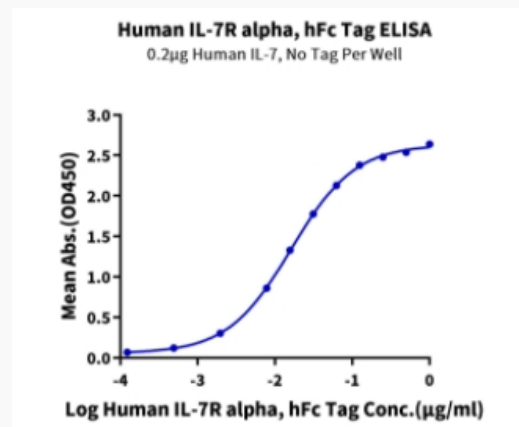
 Email: info@creative-biomart.com  Fax: 1-631-938-8127

 45-1 Ramsey Road, Shirley, NY 11967, USA

Tris-Bis PAGE



ELISA Data



 Tel: 1-631-559-9269 1-516-512-3133

 Email: info@creative-biomart.com  Fax: 1-631-938-8127

 45-1 Ramsey Road, Shirley, NY 11967, USA