

## Recombinant Human IL8 protein

Cat. No. IL8-14H Lot. No. (See product label)

### SPECIFICATION

<b>Product Overview</b>	Recombinant Human IL8 protein (77 a.a.) was expressed in Escherichia coli.
<b>Species</b>	Human
<b>Source</b>	E.coli
<b>ProteinLength</b>	77
<b>Description</b>	Interleukin-8 (IL-8) is encoded by the IL8 gene and produced by macrophages and other cell types such as epithelial cells. It is also synthesized by endothelial cells, which store IL-8 in their storage vesicles. There are many receptors capable to bind IL-8, the most affinity to IL-8 are receptors CXCR1, and CXCR2. As a member of the CXC chemokine family, function of IL-8 is the induction of chemotaxis in its target cells, like neutrophil granulocytes, basophils, and T-cells. IL-8 (72a.a.) has a 5-10-fold higher activity on neutrophil activation, compared to IL-8 (77a.a.). IL-8 is often associated with inflammation, it has been cited as a proinflammatory mediator in gingivitis and psoriasis.
<b>Form</b>	Lyophilized from a 0.2µm filtered concentrated solution in PBS, pH 7.4.
<b>Bio-activity</b>	Fully biologically active when compared to standard. The ED50 as determined by a chemotaxis bioassay using human CXCR2 transfected mouse BaF3 cells is less than 2 ng/ml, corresponding to a specific activity of > 5.0 × 10 <sup>5</sup> IU/mg.
<b>Molecular Mass</b>	Approximately 8.9 kDa, a single, non-glycosylated polypeptide chain containing 77

 Tel: 1-631-559-9269 1-516-512-3133

 Email: [info@creative-biomart.com](mailto:info@creative-biomart.com)  Fax: 1-631-938-8127

 45-1 Ramsey Road, Shirley, NY 11967, USA

	amino acids.
<b>AA Sequence</b>	AVLPRSAKELRCQCICKTYSKPFHPKFIKELRVIESGPHCANTEIIVKLSDGRELCLDPK ENWVQRVVEKFLKRAENS
<b>Endotoxin</b>	Less than 1 EU/g of rHuIL-8, 77a.a./CXCL8 as determined by LAL method.
<b>Purity</b>	>96% by SDS-PAGE and HPLC analysis.
<b>Storage</b>	Use a manual defrost freezer and avoid repeated freeze-thaw cycles. 12 months from date of receipt, -20 to -70 centigrade as supplied. 1 month, 2 to 8 centigrade under sterile conditions after reconstitution. 3 months, -20 to -70 centigrade under sterile conditions after reconstitution.
<b>Reconstitution</b>	We recommend that this vial be briefly centrifuged prior to opening to bring the contents to the bottom. Reconstitute in sterile distilled water or aqueous buffer containing 0.1 % BSA to a concentration of 0.1-1.0 mg/mL. Stock solutions should be apportioned into working aliquots and stored at ≤-20 centigrade. Further dilutions should be made in appropriate buffered solutions.

## GENE INFORMATION

<b>Gene Name</b>	IL8
<b>Official Symbol</b>	IL8
<b>Synonyms</b>	IL8; interleukin 8; interleukin-8; 3 10C; alveolar macrophage chemotactic factor I; AMCF I; b ENAP; beta endothelial cell derived neutrophil activating peptide; chemokine (C X C motif) ligand 8; CXCL8; GCP 1; GCP1; granulocyte chemotactic protein 1; IL 8; K60; LECT; LUCT; lung giant cell carcinoma derived chemotactic protein; lymphocyte derived neutrophil activating peptide; LYNAP; MDNCF; MONAP;

 Tel: 1-631-559-9269 1-516-512-3133

 Email: [info@creative-biomart.com](mailto:info@creative-biomart.com)  Fax: 1-631-938-8127

 45-1 Ramsey Road, Shirley, NY 11967, USA

monocyte derived neutrophil chemotactic factor; monocyte derived neutrophil activating peptide; NAF; NAP 1; NAP1; neutrophil activating peptide 1; SCYB8; TSG 1; tumor necrosis factor induced gene 1; emoctakin; T-cell chemotactic factor; neutrophil-activating peptide 1; chemokine (C-X-C motif) ligand 8; beta-thromboglobulin-like protein; tumor necrosis factor-induced gene 1; monocyte-derived neutrophil chemotactic factor; monocyte-derived neutrophil-activating peptide; small inducible cytokine subfamily B, member 8; lung giant cell carcinoma-derived chemotactic protein; beta endothelial cell-derived neutrophil activating peptide; GCP-1; NAP-1;

**Gene ID** [3576](#)

**mRNA Refseq** [NM\\_000584](#)

**Protein Refseq** [NP\\_000575](#)

**MIM** [146930](#)

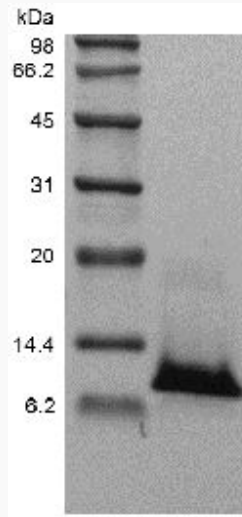
**UniProt ID** [P10145](#)

 Tel: 1-631-559-9269 1-516-512-3133

 Email: [info@creative-biomart.com](mailto:info@creative-biomart.com)  Fax: 1-631-938-8127

 45-1 Ramsey Road, Shirley, NY 11967, USA

**SDS-PAGE of IL8-  
14H**



 Tel: 1-631-559-9269 1-516-512-3133

 Email: [info@creative-biomart.com](mailto:info@creative-biomart.com)  Fax: 1-631-938-8127

 45-1 Ramsey Road, Shirley, NY 11967, USA