

Recombinant Human IL8 protein

Cat. No. IL8-15H Lot. No. (See product label)

SPECIFICATION

Product Overview	Recombinant Human IL8 protein (72 a.a.) was expressed in Escherichia coli.
Species	Human
Source	E.coli
ProteinLength	72
Description	Interleukin-8 (IL-8) is encoded by the IL8 gene and produced by macrophages and other cell types such as epithelial cells. It is also synthesized by endothelial cells, which store IL-8 in their storage vesicles. There are many receptors capable to bind IL-8, the most affinity to IL-8 are receptors CXCR1, and CXCR2. As a member of the CXC chemokine family, function of IL-8 is the induction of chemotaxis in its target cells, like neutrophil granulocytes, basophils, and T-cells. IL-8 (72a.a.) has a 5-10-fold higher activity on neutrophil activation, compared to IL-8 (77a.a.). IL-8 is often associated with inflammation and has been cited as a proinflammatory mediator in gingivitis and psoriasis.
Form	Lyophilized from a 0.2µm filtered concentrated solution in PBS, pH 7.4.
Bio-activity	Fully biologically active when compared to standard. The ED50 as determined by a chemotaxis bioassay using human CXCR2 transfected mouse BaF3 cells is less than 2 ng/ml, corresponding to a specific activity of > 5.0 × 10 ⁵ IU/mg.
Molecular Mass	Approximately 8.4 kDa, a single non-glycosylated polypeptide chain containing 72

 Tel: 1-631-559-9269 1-516-512-3133

 Email: info@creative-biomart.com  Fax: 1-631-938-8127

 45-1 Ramsey Road, Shirley, NY 11967, USA

	amino acids.
AA Sequence	SAKELRCQCIKTYSKPFHPKFIKELRVIESGPHCANTEIIVKLSDGRELCLDPKENWV QRVVEKFLKRAENS
Endotoxin	Less than 1 EU/g of rHuIL-8, 72a.a./CXCL8 as determined by LAL method.
Purity	>97% by SDS-PAGE and HPLC analysis.
Storage	Use a manual defrost freezer and avoid repeated freeze-thaw cycles. 12 months from date of receipt, -20 to -70 centigrade as supplied. 1 month, 2 to 8 centigrade under sterile conditions after reconstitution. 3 months, -20 to -70 centigrade under sterile conditions after reconstitution.
Reconstitution	We recommend that this vial be briefly centrifuged prior to opening to bring the contents to the bottom. Reconstitute in sterile distilled water or aqueous buffer containing 0.1 % BSA to a concentration of 0.1-1.0 mg/mL. Stock solutions should be apportioned into working aliquots and stored at ≤-20 centigrade. Further dilutions should be made in appropriate buffered solutions.

GENE INFORMATION

Gene Name	IL8
Official Symbol	IL8
Synonyms	IL8; interleukin 8; interleukin-8; 3 10C; alveolar macrophage chemotactic factor I; AMCF I; b ENAP; beta endothelial cell derived neutrophil activating peptide; chemokine (C X C motif) ligand 8; CXCL8; GCP 1; GCP1; granulocyte chemotactic protein 1; IL 8; K60; LECT; LUCT; lung giant cell carcinoma derived chemotactic protein; lymphocyte derived neutrophil activating peptide; LYNAP; MDNCF; MONAP;

 Tel: 1-631-559-9269 1-516-512-3133

 Email: info@creative-biomart.com  Fax: 1-631-938-8127

 45-1 Ramsey Road, Shirley, NY 11967, USA

monocyte derived neutrophil chemotactic factor; monocyte derived neutrophil activating peptide; NAF; NAP 1; NAP1; neutrophil activating peptide 1; SCYB8; TSG 1; tumor necrosis factor induced gene 1; emoctakin; T-cell chemotactic factor; neutrophil-activating peptide 1; chemokine (C-X-C motif) ligand 8; beta-thromboglobulin-like protein; tumor necrosis factor-induced gene 1; monocyte-derived neutrophil chemotactic factor; monocyte-derived neutrophil-activating peptide; small inducible cytokine subfamily B, member 8; lung giant cell carcinoma-derived chemotactic protein; beta endothelial cell-derived neutrophil activating peptide; GCP-1; NAP-1;

Gene ID [3576](#)

mRNA Refseq [NM_000584](#)

Protein Refseq [NP_000575](#)

MIM [146930](#)

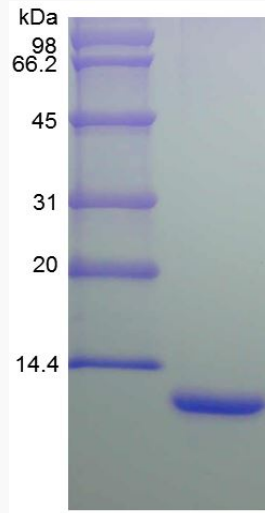
UniProt ID [P10145](#)

 Tel: 1-631-559-9269 1-516-512-3133

 Email: info@creative-biomart.com  Fax: 1-631-938-8127

 45-1 Ramsey Road, Shirley, NY 11967, USA

**SDS-PAGE of IL8-
15H**



 Tel: 1-631-559-9269 1-516-512-3133

 Email: info@creative-biomart.com  Fax: 1-631-938-8127

 45-1 Ramsey Road, Shirley, NY 11967, USA