

Active Recombinant Human IL8 protein, His-tagged

Cat. No. IL8-2326H **Lot. No.** (See product label)

SPECIFICATION

Product Overview	Active Recombinant Human IL8 protein(p10145)(28~99 aa), fused with N-terminal His tag, was expressed in E.coli.
Species	Human
Source	E.coli
ProteinLength	28-99 aa
Form	Lyophilized from sterile 20mM Tris, 150mM NaCl, pH8.0, containing 1mM EDTA, 1mM DTT, 0.01% SKL, 5% Trehalose and Proclin300.
Bio-activity	Interleukin 8 (IL8 or chemokine (C-X-C motif) ligand 8, CXCL8) is a chemokine produced by macrophages and other cell types such as epithelial cells, airway smooth muscle cells endothelial cells. IL-8, also known as neutrophil chemotactic factor, has two primary functions. It induces chemotaxis in target cells, primarily neutrophils but also other granulocytes, causing them to migrate toward the site of infection. IL8 also induces phagocytosis once they have arrived. IL8 is also known to be a potent promoter of angiogenesis. Besides, Syndecan 1 (SDC1) has been identified as an interactor of IL8, thus a binding ELISA assay was conducted to detect the interaction of recombinant human IL8 and recombinant human SDC1. Briefly, IL8 were diluted serially in PBS, with 0.01% BSA (pH 7.4). Duplicate samples of 100uL were then transferred to SDC1-coated microtiter wells and incubated for 2h at 37°C. Wells were washed with PBST and incubated for 1h with anti-IL8 pAb, then aspirated

 Tel: 1-631-559-9269 1-516-512-3133

 Email: info@creative-biomart.com  Fax: 1-631-938-8127

 45-1 Ramsey Road, Shirley, NY 11967, USA

and washed 3 times. After incubation with HRP labelled secondary antibody, wells were aspirated and washed 3 times. With the addition of substrate solution, wells were incubated 15-25 minutes at 37°C. Finally, add 50µ stop solution to the wells and read at 450nm immediately. The binding activity of IL8 and SDC1 was shown, and this effect was in a dose dependent manner.

Molecular Mass	12.0kDa
Endotoxin	<1.0EU per 1µg (determined by the LAL method).
Purity	> 95% as determined by SDS-PAGE.
Storage	Avoid repeated freeze/thaw cycles. Store at -20°C for 12 months. Aliquot and store at -80°C for 12 months.
Reconstitution	Reconstitute in 20mM Tris, 150mM NaCl (PH8.0) to a concentration of 0.1-1.0 mg/mL. Do not vortex.

GENE INFORMATION

Gene Name	IL8 interleukin 8 [Homo sapiens]
Official Symbol	IL8
Synonyms	IL8; interleukin 8; interleukin-8; 3 10C; alveolar macrophage chemotactic factor I; AMCF I; b ENAP; beta endothelial cell derived neutrophil activating peptide; chemokine (C X C motif) ligand 8; CXCL8; GCP 1; GCP1; granulocyte chemotactic protein 1; IL 8; K60; LECT; LUCT; lung giant cell carcinoma derived chemotactic protein; lymphocyte derived neutrophil activating peptide; LYNAP; MDNCF; MONAP; monocyte derived neutrophil chemotactic factor; monocyte derived neutrophil activating peptide; NAF; NAP 1; NAP1; neutrophil activating peptide 1; SCYB8; TSG

 Tel: 1-631-559-9269 1-516-512-3133

 Email: info@creative-biomart.com  Fax: 1-631-938-8127

 45-1 Ramsey Road, Shirley, NY 11967, USA

1; tumor necrosis factor induced gene 1; emoctakin; T-cell chemotactic factor; neutrophil-activating peptide 1; chemokine (C-X-C motif) ligand 8; beta-thromboglobulin-like protein; tumor necrosis factor-induced gene 1; monocyte-derived neutrophil chemotactic factor; monocyte-derived neutrophil-activating peptide; small inducible cytokine subfamily B, member 8; lung giant cell carcinoma-derived chemotactic protein; beta endothelial cell-derived neutrophil activating peptide; GCP-1; NAP-1;

Gene ID [3576](#)

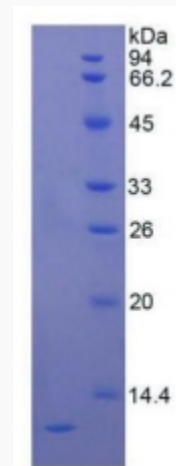
mRNA Refseq [NM_000584](#)

Protein Refseq [NP_000575](#)

MIM [146930](#)

UniProt ID [P10145](#)

SDS-PAGE

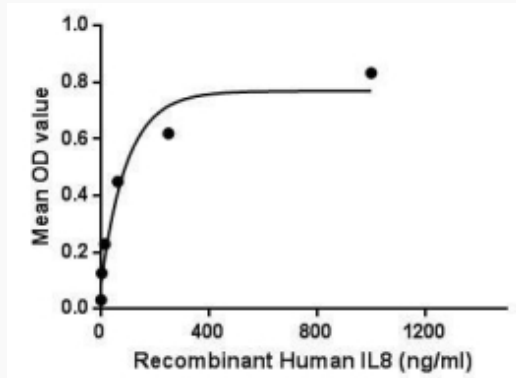


 Tel: 1-631-559-9269 1-516-512-3133

 Email: info@creative-biomart.com  Fax: 1-631-938-8127


 45-1 Ramsey Road, Shirley, NY 11967, USA

Activity



 Tel: 1-631-559-9269 1-516-512-3133

 Email: info@creative-biomart.com  Fax: 1-631-938-8127

 45-1 Ramsey Road, Shirley, NY 11967, USA