

Active Recombinant Chicken IL8 protein, His-tagged

Cat. No. IL8-3226C Lot. No. (See product label)

SPECIFICATION

Product Overview	Active Recombinant Chicken IL8 protein(P08317)(17~103 aa), fused with N-terminal His tag, was expressed in E.coli.
Species	Chicken
Source	E.coli
ProteinLength	17-103 aa
Form	Lyophilized from sterile PBS, pH7.4, containing 0.01% SKL, 1mM DTT, 5% Trehalose and Proclin300.
Bio-activity	Interleukin 8 (IL8 or chemokine (C-X-C motif) ligand 8, CXCL8) is a chemokine produced by macrophages and other cell types such as epithelial cells, airway smooth muscle cells and endothelial cells. Thus, chemotaxis assay used 24-well microchemotaxis system was undertaken to detect the chemotactic effect of IL8 on the human T-lymphocyte leukemia cell line Jurkat. Briefly, Jurkat cells were seeded into the upper chambers (100ul cell suspension, 10 ⁶ cells/ml in RPMI 1640 with FBS free) and recombinant Chicken IL8 (1ng/ml, 10ng/ml, 100ng/ml and 1000ng/ml diluted separately in serum free RPMI 1640) was added in lower chamber with a polycarbonate filter(8um pore size) used to separate the two compartments. After incubation at 37°C with 5% CO ₂ for 90min, the filter was removed, then cells in low chamber were observed by inverted microscope at low magnification (×100) and the number of migrated cells were counted at high magnification(×400) randomly (five

 Tel: 1-631-559-9269 1-516-512-3133

 Email: info@creative-biomart.com  Fax: 1-631-938-8127

 45-1 Ramsey Road, Shirley, NY 11967, USA

fields for each filter). Result shows IL8 is able to induce migration of Jurkat cells. The migrated Jurkat cells in low chamber at low magnification($\times 100$) were shown. Five fields of each chamber were randomly chosen, and the migrated cells were counted at high magnification($\times 400$). The optimum chemotaxis of IL8 occurs at 10ng/ml.

Molecular Mass 13.4kDa

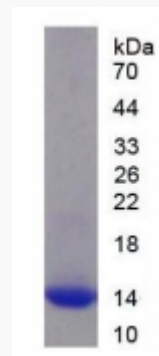
Endotoxin <1.0EU per 1 μ g (determined by the LAL method).

Purity > 90% as determined by SDS-PAGE.

Storage Avoid repeated freeze/thaw cycles. Store at -20°C for 12 months. Aliquot and store at -80°C for 12 months.

Reconstitution Reconstitute in 10mM PBS (pH7.4) to a concentration of 0.1-1.0 mg/mL. Do not vortex.

SDS-PAGE

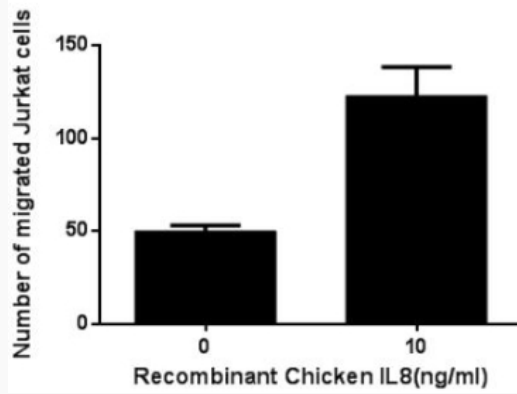


 Tel: 1-631-559-9269 1-516-512-3133

 Email: info@creative-biomart.com  Fax: 1-631-938-8127

 45-1 Ramsey Road, Shirley, NY 11967, USA

Activity



 Tel: 1-631-559-9269 1-516-512-3133

 Email: info@creative-biomart.com  Fax: 1-631-938-8127

 45-1 Ramsey Road, Shirley, NY 11967, USA