

## Active GMP Recombinant Human IL7 protein

Cat. No. IL8-4323HG Lot. No. (See product label)

### SPECIFICATION

<b>Product Overview</b>	Recombinant Human IL7 was produced in E. coli using non-animal reagents in an animal-free facility under cGMP guidelines.
<b>Species</b>	Human
<b>Source</b>	E.coli
<b>Description</b>	Interleukin-8 (IL-8) is encoded by the IL8 gene and produced by macrophages and other cell types such as epithelial cells. It is also synthesized by endothelial cells, which store IL-8 in their storage vesicles. There are many receptors capable to bind IL-8, the most affinity to IL-8 are receptors CXCR1, and CXCR2. As a member of the CXC chemokine family, function of IL-8 is the induction of chemotaxis in its target cells, like neutrophil granulocytes, basophils, and T-cells. IL-8 (72a.a.) has a 5-10-fold higher activity on neutrophil activation, compared to IL-8 (77a.a.). IL-8 is often associated with inflammation and has been cited as a proinflammatory mediator in gingivitis and psoriasis.
<b>Form</b>	Lyophilized from a 0.2 µ filtered concentrated solution in PBS, pH 7.4.
<b>Bio-activity</b>	Fully biologically active when compared to standard. The ED50 as determined by a chemotaxis bioassay using human CXCR2 transfected mouse BaF3 cells is less than 2 ng/ml, corresponding to a specific activity of > 5.0 × 10 <sup>5</sup> IU/mg.
<b>Molecular Mass</b>	Approximately 8.4 kDa, a single non-glycosylated polypeptide chain containing 72 amino acids.

 Tel: 1-631-559-9269 1-516-512-3133

 Email: [info@creative-biomart.com](mailto:info@creative-biomart.com)  Fax: 1-631-938-8127

 45-1 Ramsey Road, Shirley, NY 11967, USA

<b>AA Sequence</b>	SAKELRCQCIKTYSKPFHPKFIKELRVIESGPHCANTEIIVKLSDBGRELCLDPKENWV QRVVEKFLKRAENS
<b>Endotoxin</b>	Less than 1 EU/g of rHuIL-8, 72a.a./CXCL8 as determined by LAL method.
<b>Purity</b>	> 97 % by SDS-PAGE and HPLC analyses.
<b>Storage</b>	This lyophilized preparation is stable at 2-8 centigrade, but should be kept at -20 centigrade for long term storage, preferably desiccated. Upon reconstitution, the preparation is stable for up to one week at 2-8 centigrade. For maximal stability, apportion the reconstituted preparation into working aliquots and store at -20 centigrade to -70 centigrade. Avoid repeated freeze/thaw cycles.
<b>Reconstitution</b>	Reconstitute in sterile distilled water or aqueous buffer containing 0.1 % BSA to a concentration of 0.1-1.0 mg/mL. Stock solutions should be apportioned into working aliquots and stored at ≤ -20 centigrade. Further dilutions should be made in appropriate buffered solutions.
<b>Quality Statement</b>	Our GMP proteins are produced according to relevant sections of the following documents: WHO TRS, No. 822, 1992 Annex 1, Good Manufacturing Practices for Biological Products; USP Chapter 1043, Ancillary Materials for Cell, Gene and Tissue-Engineered Products and USP Chapter 92, Growth Factors and Cytokines Used in Cell Therapy Manufacturing.
<b>Shipping</b>	The product is shipped at ambient temperature. Upon receipt, store it immediately at the recommended temperature.

## GENE INFORMATION

**Gene Name** CXCL8 chemokine (C-X-C motif) ligand 8 [ Homo sapiens ]

 Tel: 1-631-559-9269 1-516-512-3133

 Email: [info@creative-biomart.com](mailto:info@creative-biomart.com)  Fax: 1-631-938-8127

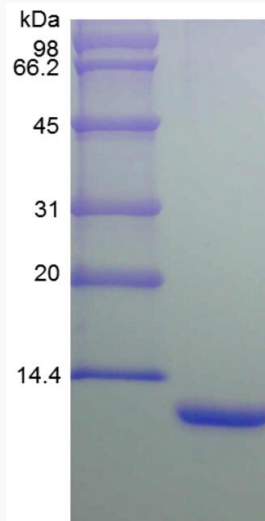
 45-1 Ramsey Road, Shirley, NY 11967, USA

<b>Official Symbol</b>	<a href="#">IL8</a>
<b>Synonyms</b>	IL8; NAF; GCP1; LECT; LUCT; NAP1; GCP-1; LYNAP; MDNCF; MONAP; NAP-1; 4q13-q21; interleukin-8; emoctakin; interleukin 8; T-cell chemotactic factor; neutrophil-activating peptide 1; beta-thromboglobulin-like protein; granulocyte chemotactic protein 1; tumor necrosis factor-induced gene 1; alveolar macrophage chemotactic factor I; monocyte-derived neutrophil chemotactic factor; monocyte-derived neutrophil-activating peptide; small inducible cytokine subfamily B, member 8; lymphocyte derived neutrophil activating peptide; lung giant cell carcinoma-derived chemotactic protein; beta endothelial cell-derived neutrophil activating peptide
<b>Gene ID</b>	<a href="#">3576</a>
<b>mRNA Refseq</b>	<a href="#">NM_000584</a>
<b>Protein Refseq</b>	<a href="#">NP_000575</a>
<b>MIM</b>	<a href="#">146930</a>
<b>UniProt ID</b>	<a href="#">P10145</a>

 Tel: 1-631-559-9269 1-516-512-3133

 Email: [info@creative-biomart.com](mailto:info@creative-biomart.com)  Fax: 1-631-938-8127

 45-1 Ramsey Road, Shirley, NY 11967, USA



Tel: 1-631-559-9269 1-516-512-3133

Email: [info@creative-biomart.com](mailto:info@creative-biomart.com) Fax: 1-631-938-8127

45-1 Ramsey Road, Shirley, NY 11967, USA