

## Recombinant Canine IL8 protein

Cat. No. IL8-571D Lot. No. (See product label)

### SPECIFICATION

<b>Product Overview</b>	Recombinant Canine IL8 protein was expressed in Escherichia coli.
<b>Species</b>	Canine
<b>Source</b>	E.coli
<b>ProteinLength</b>	79
<b>Description</b>	Interleukin-8 (IL-8) is encoded by the IL8 gene and produced by macrophages and other cell types such as epithelial cells. It is also synthesized by endothelial cells, which store IL-8 in their storage vesicles. There are many receptors capable to bind IL-8, the most affinity to IL-8 are receptors CXCR1, and CXCR2. As a member of the CXC chemokine family, function of IL-8 is the induction of chemotaxis in its target cells, like neutrophil granulocytes, basophils, and T-cells. IL-8 is often associated with inflammation and has been cited as a proinflammatory mediator in gingivitis and psoriasis.
<b>Form</b>	Lyophilized from a 0.2µm filtered concentrated solution in 2 × PBS, pH 7.4.
<b>Bio-activity</b>	Fully biologically active when compared to standard. The biological activity determined by a chemotaxis bioassay using human CXCR2 transfected murine BaF3 cells is in a concentration range of 0.15-0.75 ng/ml.
<b>Molecular Mass</b>	Approximately 9.1 kDa, a single non-glycosylated polypeptide chain containing 79 amino acids.

 Tel: 1-631-559-9269 1-516-512-3133

 Email: [info@creative-biomart.com](mailto:info@creative-biomart.com)  Fax: 1-631-938-8127

 45-1 Ramsey Road, Shirley, NY 11967, USA

<b>AA Sequence</b>	AVLSRVSSELRCQCIKTHSTPFHPKYIKELRVIDSGPHCENSEIIVKLFNGNEVCLDPK EKWVQKVVQIFLKKAQDP
<b>Endotoxin</b>	Less than 1 EU/μg of rCaIL-8/CXCL8 as determined by LAL method.
<b>Purity</b>	>95% by SDS-PAGE and HPLC analysis.
<b>Storage</b>	Use a manual defrost freezer and avoid repeated freeze-thaw cycles. 12 months from date of receipt, -20 to -70 centigrade as supplied. 1 month, 2 to 8 centigrade under sterile conditions after reconstitution. 3 months, -20 to -70 centigrade under sterile conditions after reconstitution.
<b>Reconstitution</b>	We recommend that this vial be briefly centrifuged prior to opening to bring the contents to the bottom. Reconstitute in sterile distilled water or aqueous buffer containing 0.1 % BSA to a concentration of 0.1-1.0 mg/mL. Stock solutions should be apportioned into working aliquots and stored at ≤-20 centigrade. Further dilutions should be made in appropriate buffered solutions.

## GENE INFORMATION

<b>Gene Name</b>	<a href="#">IL8</a>
<b>Official Symbol</b>	<a href="#">IL8</a>
<b>Synonyms</b>	(Ser-IL-8)72, GCP/IL-8 protein I, IL8/NAP1 form III, LYNAP, MDNCF-c, NAF
<b>Gene ID</b>	<a href="#">403850</a>
<b>mRNA Refseq</b>	<a href="#">NM_001003200.1</a>
<b>Protein Refseq</b>	<a href="#">NP_001003200.1</a>

 Tel: 1-631-559-9269 1-516-512-3133

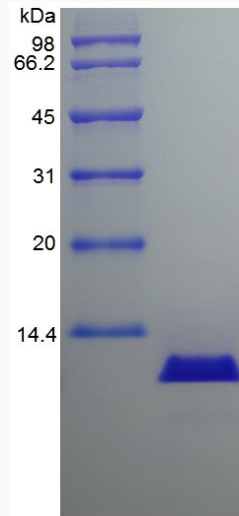
 Email: [info@creative-biomart.com](mailto:info@creative-biomart.com)  Fax: 1-631-938-8127

 45-1 Ramsey Road, Shirley, NY 11967, USA

UniProt ID

P41324

SDS-PAGE of IL8-571D



 Tel: 1-631-559-9269 1-516-512-3133

 Email: [info@creative-biomart.com](mailto:info@creative-biomart.com)  Fax: 1-631-938-8127

 45-1 Ramsey Road, Shirley, NY 11967, USA