

## Recombinant Dog IL8 Protein (23-101 aa), GST-tagged

Cat. No. IL8-579D Lot. No. (See product label)

### SPECIFICATION

<b>Product Overview</b>	Recombinant Dog IL8 Protein (23-101 aa) is produced by E. coli expression system. This protein is fused with a GST tag at the N-terminal. Protein Description: Full Length of Mature Protein.
<b>Species</b>	Dog
<b>Source</b>	E.coli
<b>ProteinLength</b>	23-101 aa
<b>Description</b>	IL-8 is a chotactic factor that attracts neutrophils, basophils, and T-cells, but not monocytes. It is also involved in neutrophil activation. It is released from several cell types in response to an inflammatory stimulus.
<b>Form</b>	Tris-based buffer, 50% glycerol
<b>Molecular Mass</b>	36.1 kDa
<b>AA Sequence</b>	AVLSRVSSELRCQCIKTHSTPFHPKYIKELRVIDSGPHCENSEIIVKLFNGNEVCLDPK EKWVQKVQIFLKKAEKQDP
<b>Purity</b>	> 90% as determined by SDS-PAGE.
<b>Notes</b>	Repeated freezing and thawing is not recommended. Store working aliquots at 4 centigrade for up to one week.

 Tel: 1-631-559-9269 1-516-512-3133

 Email: [info@creative-biomart.com](mailto:info@creative-biomart.com)  Fax: 1-631-938-8127

 45-1 Ramsey Road, Shirley, NY 11967, USA

**Storage**

The shelf life is related to many factors, storage state, buffer ingredients, storage temperature and the stability of the protein itself. Generally, the shelf life of liquid form is 6 months at -20 centigrade/-80 centigrade. The shelf life of lyophilized form is 12 months at -20 centigrade/-80 centigrade.

**Concentration**

A hardcopy of COA with concentration instruction is sent along with the products.

**GENE INFORMATION**

**Gene Name** IL8 interleukin 8 [ *Canis lupus familiaris* ]

**Official Symbol** IL8

**Synonyms** IL8; interleukin 8; interleukin-8; IL-8;

**Gene ID** 403850

**mRNA Refseq** NM\_001003200

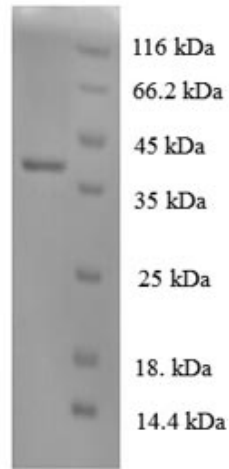
**Protein Refseq** NP\_001003200

**UniProt ID** P41324

 Tel: 1-631-559-9269 1-516-512-3133

 Email: [info@creative-biomart.com](mailto:info@creative-biomart.com)  Fax: 1-631-938-8127

 45-1 Ramsey Road, Shirley, NY 11967, USA



(Tris-Glycine gel) Discontinuous SDS-PAGE (reduced) with 5% enrichment gel and 15% separation gel.

 Tel: 1-631-559-9269 1-516-512-3133

 Email: [info@creative-biomart.com](mailto:info@creative-biomart.com)  Fax: 1-631-938-8127

 45-1 Ramsey Road, Shirley, NY 11967, USA