

Recombinant Sheep IL8 Protein (23-101 aa), His-tagged

Cat. No. IL8-580S Lot. No. (See product label)

SPECIFICATION

Product Overview	Recombinant Sheep IL8 Protein (23-101 aa) is produced by E. coli expression system. This protein is fused with a 6xHis tag at the N-terminal. Protein Description: Full Length of Mature Protein.
Species	Sheep
Source	E.coli
ProteinLength	23-101 aa
Description	IL-8 is a chotactic factor that attracts neutrophils, basophils, and T-cells, but not monocytes. It is also involved in neutrophil activation. It is released from several cell types in response to an inflammatory stimulus.
Form	Tris-based buffer, 50% glycerol
Molecular Mass	13.1 kDa
AA Sequence	AVLSRMSTELRCQCICKTHSTPFHPKFIKELRVIESGPHCENSEIIVKLTNGKEVCLDPK EKWVQKVVQAFLKRAEKQDP
Purity	> 90% as determined by SDS-PAGE.
Notes	Repeated freezing and thawing is not recommended. Store working aliquots at 4 centigrade for up to one week.

 Tel: 1-631-559-9269 1-516-512-3133

 Email: info@creative-biomart.com  Fax: 1-631-938-8127

 45-1 Ramsey Road, Shirley, NY 11967, USA

Storage The shelf life is related to many factors, storage state, buffer ingredients, storage temperature and the stability of the protein itself. Generally, the shelf life of liquid form is 6 months at -20 centigrade/-80 centigrade. The shelf life of lyophilized form is 12 months at -20 centigrade/-80 centigrade.

Concentration A hardcopy of COA with concentration instruction is sent along with the products.

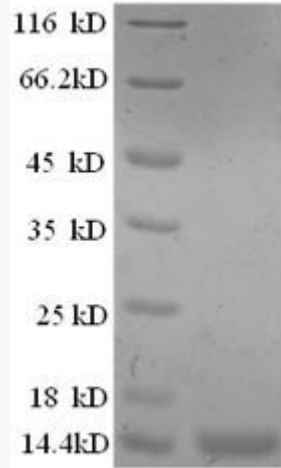
GENE INFORMATION

Gene Name	IL8 interleukin 8 [<i>Ovis aries</i>]
Official Symbol	IL8
Synonyms	IL8; interleukin 8; interleukin-8; IL-8;
Gene ID	443418
mRNA Refseq	NM_001009401
Protein Refseq	NP_001009401
UniProt ID	P36925

 Tel: 1-631-559-9269 1-516-512-3133

 Email: info@creative-biomart.com  Fax: 1-631-938-8127

 45-1 Ramsey Road, Shirley, NY 11967, USA



(Tris-Glycine gel) Discontinuous SDS-PAGE (reduced) with 5% enrichment gel and 15% separation gel.

 Tel: 1-631-559-9269 1-516-512-3133

 Email: info@creative-biomart.com  Fax: 1-631-938-8127

 45-1 Ramsey Road, Shirley, NY 11967, USA