

Active Recombinant Human ILDR2 Full Length Transmembrane protein(Nanodisc)

Cat. No. ILDR2-029H Lot. No. (See product label)

SPECIFICATION

Product Overview	Recombinant Human ILDR2 Full Length Transmembrane protein(Q71H61), was expressed in HEK293.
Species	Human
Source	HEK293
Form	Lyophilized from nanodisc solubilization buffer (20 mM Tris-HCl, 150 mM NaCl, pH 8.0). Normally 5% – 8% trehalose is added as protectants before lyophilization. Please see Certificate of Analysis for specific instructions.
Bio-activity	Elisa plates were pre-coated with Flag Tag ILDR2-Nanodisc (0.2µg/per well). Serial diluted anti-Flag monoclonal antibody solutions were added, washed, and incubated with secondary antibody before Elisa reading. From above data, the EC50 for anti-Flag monoclonal antibody binding with ILDR2-Nanodisc is 4.527ng/ml.
Molecular Mass	The human full length ILDR2 protein has a MW of 71.2 kDa.
Storage	Store at -20°C to -80°C for 12 months in lyophilized form. After reconstitution, if not intended for use within a month, aliquot and store at -80°C (Avoid repeated freezing and thawing). Lyophilized proteins are shipped at ambient temperature.
Reconstitution	It is recommended that sterile water be added to the vial to prepare a stock solution of 0.2 ug/ul. Centrifuge the vial at 4°C before opening to recover the entire contents.

 Tel: 1-631-559-9269 1-516-512-3133

 Email: info@creative-biomart.com  Fax: 1-631-938-8127

 45-1 Ramsey Road, Shirley, NY 11967, USA

Full Length Full L.

GENE INFORMATION

Gene Name ILDR2 immunoglobulin-like domain containing receptor 2 [Homo sapiens]

Official Symbol ILDR2

Synonyms C1orf32; dJ782G3.1; RP4-782G3.2

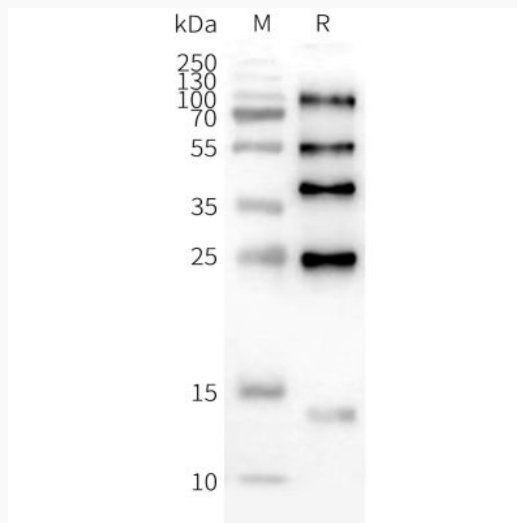
Gene ID 387597

mRNA Refseq NM_199351.2

Protein Refseq NP_955383.1

UniProt ID Q71H61

Western blot

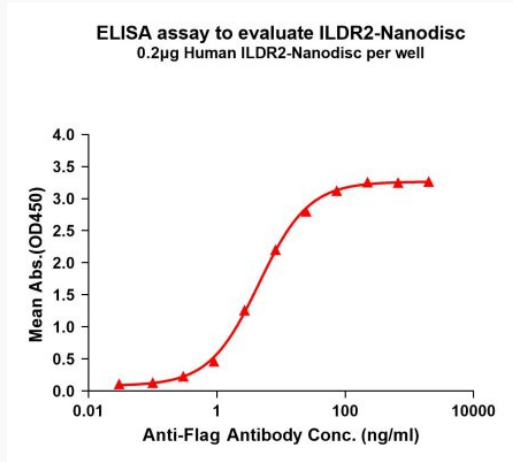


 Tel: 1-631-559-9269 1-516-512-3133

 Email: info@creative-biomart.com  Fax: 1-631-938-8127

 45-1 Ramsey Road, Shirley, NY 11967, USA

Activity



 Tel: 1-631-559-9269 1-516-512-3133

 Email: info@creative-biomart.com  Fax: 1-631-938-8127

 45-1 Ramsey Road, Shirley, NY 11967, USA