

Recombinant Human ILDR2 Protein (1-186 aa), GST-tagged

Cat. No. ILDR2-1045H Lot. No. (See product label)

SPECIFICATION

Product Overview	Recombinant Human ILDR2 Protein (1-186 aa) is produced by E. coli expression system. This protein is fused with a GST tag at the N-terminal. Research Area: Immunology. Protein Description: Partial.
Species	Human
Source	E.coli
ProteinLength	1-186 aa
Description	May be involved in lipid homeostasis and ER stress pathways.
Form	Tris-based buffer, 50% glycerol
Molecular Mass	48.1 kDa
AA Sequence	MDRVLLRWISLFWLTAMVEGLQVTPDKKKVAMLFQPTVLRCHFSTSSHQPAVVQ WKFKSYCQDRMGESLGMSSTRAQSLSKRNLEWDPYLDCLDSRRTVRVVASKQGS TVTLGDFYRGREITIVHDADLQIGKLMWGDSGLYYCIITTPDDLEGKNEDSVELLVLG RTGLLADLLPSFAVEIMPE
Purity	> 90% as determined by SDS-PAGE.
Notes	Repeated freezing and thawing is not recommended. Store working aliquots at 4 centigrade for up to one week.

 Tel: 1-631-559-9269 1-516-512-3133

 Email: info@creative-biomart.com  Fax: 1-631-938-8127

 45-1 Ramsey Road, Shirley, NY 11967, USA

Storage

The shelf life is related to many factors, storage state, buffer ingredients, storage temperature and the stability of the protein itself. Generally, the shelf life of liquid form is 6 months at -20 centigrade/-80 centigrade. The shelf life of lyophilized form is 12 months at -20 centigrade/-80 centigrade.

Concentration

A hardcopy of COA with concentration instruction is sent along with the products.

GENE INFORMATION

Gene Name ILDR2 immunoglobulin-like domain containing receptor 2 [Homo sapiens]

Official Symbol ILDR2

Synonyms C1orf32; dJ782G3.1; RP4-782G3.2;

Gene ID 387597

mRNA Refseq NM_199351.2

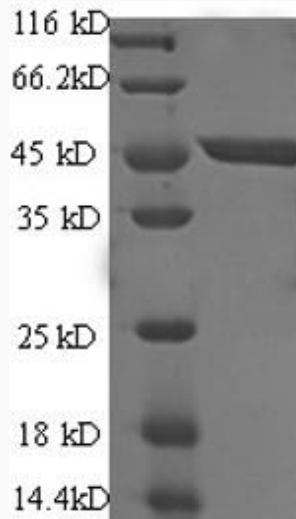
Protein Refseq NP_955383.1

UniProt ID Q71H61

 Tel: 1-631-559-9269 1-516-512-3133

 Email: info@creative-biomart.com  Fax: 1-631-938-8127

 45-1 Ramsey Road, Shirley, NY 11967, USA



(Tris-Glycine gel) Discontinuous SDS-PAGE (reduced) with 5% enrichment gel and 15% separation gel.

 Tel: 1-631-559-9269 1-516-512-3133

 Email: info@creative-biomart.com  Fax: 1-631-938-8127

 45-1 Ramsey Road, Shirley, NY 11967, USA