

## Recombinant Human ILDR2 Protein (1-186 aa), His-tagged

Cat. No. ILDR2-1678H Lot. No. (See product label)

### SPECIFICATION

<b>Product Overview</b>	Recombinant Human ILDR2 Protein (1-186 aa) is produced by Yeast expression system. This protein is fused with a 6xHis tag at the N-terminal. Research Area: Immunology. Protein Description: Partial.
<b>Species</b>	Human
<b>Source</b>	Yeast
<b>ProteinLength</b>	1-186 aa
<b>Description</b>	May be involved in lipid homeostasis and ER stress pathways.
<b>Form</b>	Tris-based buffer,50% glycerol
<b>Molecular Mass</b>	23.1 kDa
<b>AA Sequence</b>	MDRVLLRWISLFWLTAMVEGLQVTPDKKKVAMLFQPTVLRCHFSTSSHQPAVVQ WKFKSYCQDRMGESLGMSSTRAQSLSKRNLEWDPYLDCLDSRRTVRVVASKQGS TVTLGDFYRGREITIVHDADLQIGKLMWGDSGLYYCIITTPDDLEGKNEDSVELLVLG RTGLLADLLPSFAVEIMPE
<b>Purity</b>	> 90% as determined by SDS-PAGE.
<b>Notes</b>	Repeated freezing and thawing is not recommended. Store working aliquots at 4 centigrade for up to one week.

 Tel: 1-631-559-9269 1-516-512-3133

 Email: [info@creative-biomart.com](mailto:info@creative-biomart.com)  Fax: 1-631-938-8127

 45-1 Ramsey Road, Shirley, NY 11967, USA

**Storage** The shelf life is related to many factors, storage state, buffer ingredients, storage temperature and the stability of the protein itself. Generally, the shelf life of liquid form is 6 months at -20 centigrade/-80 centigrade. The shelf life of lyophilized form is 12 months at -20 centigrade/-80 centigrade.

**Concentration** A hardcopy of COA with reconstitution instruction is sent along with the products.

## GENE INFORMATION

**Gene Name** ILDR2 immunoglobulin-like domain containing receptor 2 [ Homo sapiens ]

**Official Symbol** ILDR2

**Synonyms** C1orf32; dJ782G3.1; RP4-782G3.2;

**Gene ID** 387597

**mRNA Refseq** NM\_199351.2

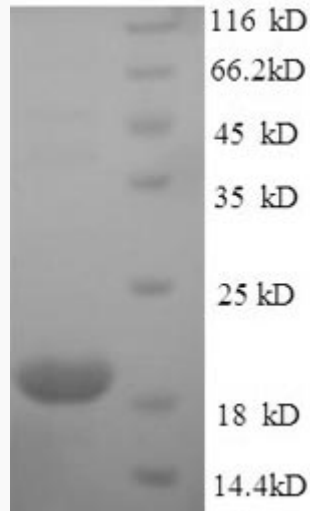
**Protein Refseq** NP\_955383.1

**UniProt ID** Q71H61

 Tel: 1-631-559-9269 1-516-512-3133

 Email: [info@creative-biomart.com](mailto:info@creative-biomart.com)  Fax: 1-631-938-8127

 45-1 Ramsey Road, Shirley, NY 11967, USA



(Tris-Glycine gel) Discontinuous SDS-PAGE (reduced) with 5% enrichment gel and 15% separation gel.

 Tel: 1-631-559-9269 1-516-512-3133

 Email: [info@creative-biomart.com](mailto:info@creative-biomart.com)  Fax: 1-631-938-8127

 45-1 Ramsey Road, Shirley, NY 11967, USA