

# Recombinant Full Length Human ILF3 Protein, C-Flag-tagged

Cat. No. ILF3-1129HFL Lot. No. (See product label)

## SPECIFICATION

**Product Overview** Recombinant Full Length Human ILF3 Protein, fused to Flag-tag at C-terminus, was expressed in Mammalian cells.

**Species** Human

**Source** Mammalian Cells

**Form** 25 mM Tris HCl, pH 7.3, 100 mM glycine, 10% glycerol.

**Molecular Mass** 95.2 kDa

### AA Sequence

MRIFVNDDRHVMAKHSSVYPTQEELEAVQNMVSHTERALKAVSDWIDEQEKGSSSE  
 QAESDNMDVPPEDDS KEGAGEQKTEHMTRTLGRVMRVGLVAKLLLLKGDLDLELV  
 LLCCKEPTTALLDKVADNLAIQLAAVTEDEK YEILQSVDDAAIVIKNTKEPPLSLTIHLTS  
 PVVREEMEKVLAGE TLSVNDPPDVLDRQKCLAALASLRHA KWFQARANGLKSCVIV  
 IRVLRDLCTRVPTWGPLRGWPLELLCEKSIGTANRPMGAGEALRRVLECLASGI VM  
 PDGSGIYDPCEKEATDAIGHLDRQQREDITQSAQHALRLAAFGQLHKVLGMDPLPSK  
 MPKKPKNENPV DYTQVQIPPSTTYAITPMKRPMEEDEGEEKSPSKKKKKIKKKEEKAEP  
 PQAMNALMRLNQLKPLGLQYKLVLSQ TGPVHAPIFTMSVEVDGNSFEASGPSKKTAKL  
 HVAVKVLQDMGLPTGAEGRDSSKGEDSAEETEAKPAVV APAPVVEAVSTPSAAFP  
 SDATAEQGPILTKHGKNPVMELNEKRRGLKYELISETGGSHDKRFVMEVEVDG QKF  
 QGAGSNKKVAKAYAALAALEKLPDTPALDANKKKRAPVPVRGGPKFAAKPHNPG  
 FGMGGPMHNEV PPPPNLRGRGRGGSIRGRGRGRGFGGANHGGYMNAGAGYGS  
 YGYGGNSATAGYSQFYSNGGHSGNASGGG GGGGGGSSGYGSYYQGDNYNSPV

 Tel: 1-631-559-9269 1-516-512-3133

 Email: [info@creative-biomart.com](mailto:info@creative-biomart.com)  Fax: 1-631-938-8127

 45-1 Ramsey Road, Shirley, NY 11967, USA

PPKHAGKKQPHGGQQKPSYSGSYQSHQGQQQSYNQSPYSNYGPPQGK QKGYN  
 HGQGSYSYSNSYNSPGGGGSDYNYESKFNYSGSGGRSGGNSYGSYGASYNPG  
 SHGGYGGGSGGG  
 SSYQGKQGGYSQSNYNSPGSGQNYSGPPSSYQSSQGGYGRNADHSMNYQYRTR  
 TRPLEQKLISEEDLAANDILDYKDDDDKV

**Purity** > 80% as determined by SDS-PAGE and Coomassie blue staining.

**Stability** Stable for 12 months from the date of receipt of the product under proper storage and handling conditions. Avoid repeated freeze-thaw cycles.

**Storage** Store at -80 centigrade.

**Concentration** >50 ug/mL as determined by microplate BCA method.

**Preparation** Recombinant protein was captured through anti-DDK affinity column followed by conventional chromatography steps.

**Protein Families** Druggable Genome, Transcription Factors

**Full Length** Full L.

## GENE INFORMATION

**Gene Name** ILF3 interleukin enhancer binding factor 3 [ Homo sapiens (human) ]

**Official Symbol** ILF3

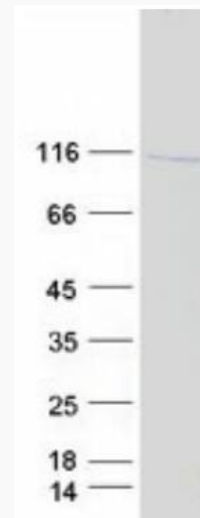
**Synonyms** CBTF; DRBF; MMP4; MPP4; NF90; NFAR; NF110; NF90a; NF90b; NF90c; NFAR2; TCP80; DRBP76; NF110b; NFAR-1; NFAR-2; NFAR90; TCP110; MPP4110; NF90ctv; NFAR110; MPHOSPH4; NF-AT-90

 Tel: 1-631-559-9269 1-516-512-3133

 Email: [info@creative-biomart.com](mailto:info@creative-biomart.com)  Fax: 1-631-938-8127

 45-1 Ramsey Road, Shirley, NY 11967, USA

Gene ID	3609
mRNA Refseq	NM_012218.4
Protein Refseq	NP_036350.2
MIM	603182
UniProt ID	Q12906



Coomassie blue staining of purified ILF3 protein.

Tel: 1-631-559-9269 1-516-512-3133

Email: [info@creative-biomart.com](mailto:info@creative-biomart.com) Fax: 1-631-938-8127

45-1 Ramsey Road, Shirley, NY 11967, USA