

Recombinant Human ILF3 Protein, Myc/DDK-tagged, C13 and N15-labeled

Cat. No. ILF3-3010H **Lot. No.** (See product label)

SPECIFICATION

Product Overview	ILF3 MS Standard C13 and N15-labeled recombinant protein (NP_036350) with a C-terminal MYC/DDK tag, was expressed in HEK293 cells.
Species	Human
Source	HEK293
Description	This gene encodes a double-stranded RNA (dsRNA) binding protein that complexes with other proteins, dsRNAs, small noncoding RNAs, and mRNAs to regulate gene expression and stabilize mRNAs. This protein (NF90, ILF3) forms a heterodimer with a 45 kDa transcription factor (NF45, ILF2) required for T-cell expression of interleukin 2. This complex has been shown to affect the redistribution of nuclear mRNA to the cytoplasm. Knockdown of NF45 or NF90 protein retards cell growth, possibly by inhibition of mRNA stabilization. In contrast, an isoform (NF110) of this gene that is predominantly restricted to the nucleus has only minor effects on cell growth when its levels are reduced. Alternative splicing results in multiple transcript variants encoding distinct isoforms.
Molecular Mass	95.2 kDa
AA Sequence	MRIFVNDDRHVMMAKHSSVYPTQEELEAVQNMVSHTERALKAVSDWIDEQEKGSS QAESDNMDVPPEDDSKEGAGEQKTEHMTRTLRGVMRVGLVAKGLLLKGDLDLELV LLCKEKPTTALLDKVADNLAIQLAAVTEDKYEILQSVDDAAIVIKNTKEPPLSLTIHLTSP

 Tel: 1-631-559-9269 1-516-512-3133

 Email: info@creative-biomart.com  Fax: 1-631-938-8127

 45-1 Ramsey Road, Shirley, NY 11967, USA

VVREEMEKVLAGETLSVNDPPDVLDRQKCLAALASLRHAKWFQARANGLKSCVIVIR
 VLRDLCTRVPTWGPLRGWPLELLCEKSIGTANRPMGAGEALRRVLECLASGIVMPD
 GSGIYDPCEKEATDAIGHLDRQQREDITQSAQHALRLAAFQQLHKVLGMDPLPSKM
 PKKPKNENPVDYTVQIPPSTTYAITPMKRPMEEEDGEKSPSKKKKKIQKKEEKAEP
 QAMNALMRLNQLKPGQLQYKLVSTGTPVHAPIFTMSVEVDGNSFEASGPSKKTAKLH
 VAVKVLQDMGLPTGAEGRDSSKGEDSAEETEAKPAVVAPAPVVEAVSTPSAAFPSD
 ATAEQGPILTKHGKNPVMELNEKRRGLKYELISETGGSHDKRFVMEVEVDGQKFQG
 AGSNKKVAKAYAALAALEKLFDPDTPLALDANKKKRAPVPVRGGPKFAAKPHNPGFG
 MGGPMHNEVPPPNLRGRGRGGSIRGRGRGRGFGGANHGGYMNAGAGYGSYGY
 GGNSATAGYSQFYSNGGHSGNASGGGGGGGGSSGYGSYYQGDNYNSPVPKPH
 AGKKQPHGGQKPSYGSYQSHQGQQSYNQSPYSNYGPPQGKQKGYNHGQG
 SYSYSNSYNSPGGGGGSDYNYESKFNYSGSGGRSGGNSYSGGGASYNPGSHGG
 YGGGSGGGSSYQGKGGYSQSNYNSPGSGQNYSGPPSSYQSSQGGYGRNADH
 SMNYQYRTRTRPLEQKLISEEDLAANDILDYKDDDDKV

Purity > 80% as determined by SDS-PAGE and Coomassie blue staining

Stability Stable for 3 months from receipt of products under proper storage and handling conditions.

Storage Store at -80 centigrade. Avoid repeated freeze-thaw cycles.

Concentration 50 µg/mL as determined by BCA

Storage Buffer 100 mM glycine, 25 mM Tris-HCl, pH 7.3.

GENE INFORMATION

Gene Name ILF3 interleukin enhancer binding factor 3 [Homo sapiens (human)]

Official Symbol ILF3

 Tel: 1-631-559-9269 1-516-512-3133

 Email: info@creative-biomart.com  Fax: 1-631-938-8127

 45-1 Ramsey Road, Shirley, NY 11967, USA

Synonyms

ILF3; interleukin enhancer binding factor 3, 90kDa; interleukin enhancer binding factor 3, 90kD; interleukin enhancer-binding factor 3; DRBP76; M phase phosphoprotein 4; MPHOSPH4; MPP4; NF90; NFAR 1; M-phase phosphoprotein 4; translational control protein 80; dsRNA binding protein NFAR-2/MPP4; nuclear factor associated with dsRNA; double-stranded RNA-binding protein, 76 kD; nuclear factor of activated T-cells 90 kDa; nuclear factor of activated T-cells, 90 kD; CBTF; DRBF; MMP4; NFAR; NF110; NF90a; NF90b; NFAR2; TCP80; NF110b; NFAR-1; TCP110; NF-AT-90;

Gene ID

[3609](#)

mRNA Refseq

[NM_012218](#)

Protein Refseq

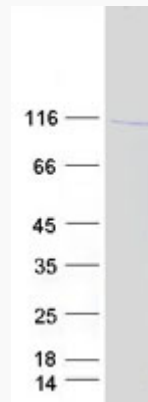
[NP_036350](#)

MIM

[603182](#)

UniProt ID

[Q12906](#)

SDS-PAGE


 Tel: 1-631-559-9269 1-516-512-3133

 Email: info@creative-biomart.com  Fax: 1-631-938-8127

 45-1 Ramsey Road, Shirley, NY 11967, USA