

## Recombinant Human ILK protein, His-tagged

Cat. No. ILK-643H Lot. No. (See product label)

### SPECIFICATION

<b>Product Overview</b>	Recombinant Human ILK protein(Q13418)(1-452aa), fused with C-terminal His tag, was expressed in E.coli.
<b>Species</b>	Human
<b>Source</b>	E.coli
<b>ProteinLength</b>	1-452aa
<b>Form</b>	If the delivery form is liquid, the default storage buffer is Tris/PBS-based buffer, 5%-50% glycerol. If the delivery form is lyophilized powder, the buffer before lyophilization is Tris/PBS-based buffer, 6% Trehalose, pH 8.0.
<b>Molecular Mass</b>	58.3 kDa
<b>Purity</b>	Greater than 85% as determined by SDS-PAGE.
<b>Storage</b>	Store at -20°C/-80°C upon receipt, aliquoting is necessary for mutiple use. Avoid repeated freeze-thaw cycles.
<b>Reconstitution</b>	We recommend that this vial be briefly centrifuged prior to opening to bring the contents to the bottom. Please reconstitute protein in deionized sterile water to a concentration of 0.1-1.0 mg/mL. We recommend to add 5-50% of glycerol (final concentration) and aliquot for long-term storage at -20°C/-80°C.

 Tel: 1-631-559-9269 1-516-512-3133

 Email: [info@creative-biomart.com](mailto:info@creative-biomart.com)  Fax: 1-631-938-8127

 45-1 Ramsey Road, Shirley, NY 11967, USA

**AA Sequence**

MDDIFTQCREGNAVAVRLWLDNTENDLNQGGDDHGFSPHLHWACREGRSAVVEMLIM  
 RGARINVMNRGDDTPLHLAASHGHRDIVQKLLQYKADINAVNEHGNVPLHYACFWG  
 QDQVAEDLVANGALVSICNKYGEMPVDKAKAPLRELLRERAEKMGQNLNRIPYKDT  
 FWKGTTRTRPRNGTLNKHSGIDFKQLNFLTCLNENHSGELWKGRWQGNDIVVKVLK  
 VRDWSTRKSRDFNEECPLRIFSHPNVLPVLGACQSPPAPHPTLITHWMPYGSLYN  
 VLHEGTNFVVDQSQAVKFDLDMARGMAFLHTLEPLIPRHALNSRSVMIDEDMTARIS  
 MADVKFSFQCPGRMYAPAWVAPEALQKKPEDTNRRSADMWSFAVLLWELVTREV  
 PFADLSNMEIGMKVALEGLRPTIPPGISPVCKLMKICMNEDPAKRPKFDMIVPILEK  
 MQDK

## GENE INFORMATION

**Gene Name** [ILK integrin-linked kinase \[ Homo sapiens \]](#)

**Official Symbol** [ILK](#)

**Synonyms** ILK; integrin-linked kinase; integrin-linked protein kinase; ILK-1; p59ILK; integrin-linked kinase-2; 59 kDa serine/threonine-protein kinase; P59; ILK-2; DKFZp686F1765;

**Gene ID** [3611](#)

**mRNA Refseq** [NM\\_001014794](#)

**Protein Refseq** [NP\\_001014794](#)

**MIM** [602366](#)

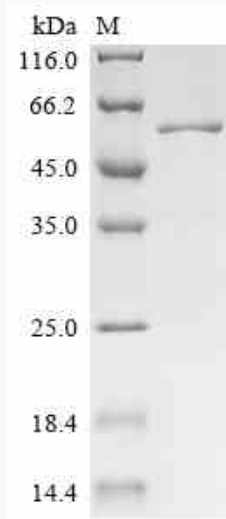
**UniProt ID** [Q13418](#)

 Tel: 1-631-559-9269 1-516-512-3133

 Email: [info@creative-biomart.com](mailto:info@creative-biomart.com)  Fax: 1-631-938-8127

 45-1 Ramsey Road, Shirley, NY 11967, USA

**SDS-PAGE**



 Tel: 1-631-559-9269 1-516-512-3133

 Email: [info@creative-biomart.com](mailto:info@creative-biomart.com)  Fax: 1-631-938-8127

 45-1 Ramsey Road, Shirley, NY 11967, USA