

Recombinant Full Length Human ILK associated serine/threonine phosphatase Protein, His tagged

Cat. No. ILKAP-147H Lot. No. (See product label)

SPECIFICATION

Product Overview	Recombinant human ILKAP protein (Q9H0C8) (Met 1-His 392) with a His tag at the N-terminus and a His tag at the C-terminus was expressed in E. coli.
Species	Human
Source	E.coli
ProteinLength	1-392aa
Description	Integrin Linked Kinase 1 Associated Phosphatase (ILKAP), also called PP2Cdelta, is a serine/threonine phosphatase that is stimulated by Mn ²⁺ ions but inhibited by Mg ²⁺ and is insensitive to the phosphatase inhibitor okadaic acid. It binds to ILK1 and dephosphorylates it, decreasing the stimulation of the GSK-3 beta pathway by cell adhesion without affecting Akt signaling. Transfection studies have shown that ILKAP activity inhibits cell cycle progression from the G1 to S phase. ILKAP is expressed in many tissues but is highest in skeletal and cardiac muscle. Its gene is found in a region of chromosome 2 that is frequently deleted in oral cancers.
Tag	N-His and C-His
Molecular Mass	44.6 kDa
Endotoxin	Less than 1.0 EU/μg by the LAL method.

 Tel: 1-631-559-9269 1-516-512-3133

 Email: info@creative-biomart.com  Fax: 1-631-938-8127

 45-1 Ramsey Road, Shirley, NY 11967, USA

Purity	>95% as determined by SDS-PAGE.
Storage	Please avoid repeated freeze-thaw cycles. Samples are stable for up to twelve months from date of receipt at -20 to -80 centigrade. It is recommended that aliquot the reconstituted solution to minimize freeze-thaw cycles.
Storage Buffer	Lyophilized from a 0.2 µm filtered solution of PBS, pH7.4, 5% Trehalose, 5% mannitol.
Reconstitution	Reconstitute at 250 µg/mL in sterile water.

GENE INFORMATION

Gene Name	ILKAP ILK associated serine/threonine phosphatase [Homo sapiens (human)]
Official Symbol	ILKAP
Synonyms	ILKAP; integrin-linked kinase-associated serine/threonine phosphatase; integrin linked kinase associated serine/threonine phosphatase 2C; integrin-linked kinase-associated serine/threonine phosphatase 2C; DKFZP434J2031; FLJ10181; protein phosphatase 2c, delta isozyme; integrin-linked kinase associated phosphatase; ILKAP2; ILKAP3; PP2C-DELTA; MGC4846; DKFZp434J2031;
Gene ID	80895
mRNA Refseq	NM_030768
Protein Refseq	NP_110395
MIM	618909

 Tel: 1-631-559-9269 1-516-512-3133

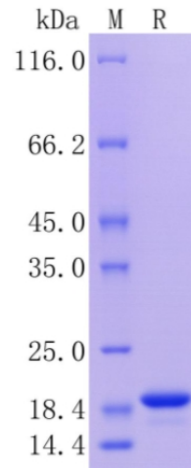
 Email: info@creative-biomart.com  Fax: 1-631-938-8127

 45-1 Ramsey Road, Shirley, NY 11967, USA

UniProt ID

Q9H0C8

Protein on SDS-
PAGE under
reducing (R)
condition.



 Tel: 1-631-559-9269 1-516-512-3133

 Email: info@creative-biomart.com  Fax: 1-631-938-8127

 45-1 Ramsey Road, Shirley, NY 11967, USA