

Recombinant Human ILKAP Protein, GST-tagged

Cat. No. ILKAP-5156H Lot. No. (See product label)

SPECIFICATION

Product Overview	Human ILKAP full-length ORF (AAH06576, 1 a.a. - 392 a.a.) recombinant protein with GST-tag at N-terminal.
Species	Human
Source	Wheat Germ
Description	The protein encoded by this gene is a protein serine/threonine phosphatase of the PP2C family. This protein can interact with integrin-linked kinase (ILK/ILK1), a regulator of integrin mediated signaling, and regulate the kinase activity of ILK. Through the interaction with ILK, this protein may selectively affect the signaling process of ILK-mediated glycogen synthase kinase 3 beta (GSK3beta), and thus participate in Wnt signaling pathway. [provided by RefSeq]
Molecular Mass	68.86 kDa
AA Sequence	MDLFGDLPEPERSRPAAGKEAQKGPLLFDDLPPASSTDSGSGGPLLFDDLPPASS GDSGSLATSISQMVKTEGKGAKRKTSEEEKNGSEELVEKKVCKASSVIFGLKGYVAE RKGEREEMQDAHVILNDITEECRPPSSLITRVSYFAVFDGHHGIRASKFAAQNHLHQN LIRKFPKGDVISVEKTVKRCLLDTFKHTDEEFLKQASSQKPAWKDGGSTATCVLAVDNI LYIANLGDSTRAILCRYNEESQKHAALSLSKEHNPTQYEERMRIQKAGGNVRDGRVLG VLEVSRSIGDGQYKRCGVTSVPDIRRCQLTPNDRFILLACDGLFKVFTPEEAVNFILS CLEDEKIQTREGKSAADARYEAACNRLANKAVQRGSADNVTVMVVRIGH
Applications	Enzyme-linked Immunoabsorbent Assay

 Tel: 1-631-559-9269 1-516-512-3133

 Email: info@creative-biomart.com  Fax: 1-631-938-8127

 45-1 Ramsey Road, Shirley, NY 11967, USA

Western Blot (Recombinant protein)
 Antibody Production
 Protein Array

Notes	Best use within three months from the date of receipt of this protein.
Storage	Store at -80 centigrade. Aliquot to avoid repeated freezing and thawing.
Storage Buffer	50 mM Tris-HCl, 10 mM reduced Glutathione, pH=8.0 in the elution buffer.

GENE INFORMATION

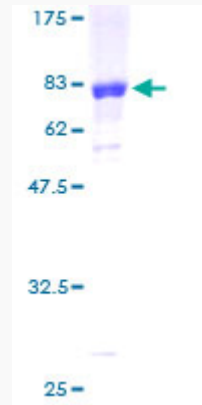
Gene Name	ILKAP integrin-linked kinase-associated serine/threonine phosphatase [Homo sapiens]
Official Symbol	ILKAP
Synonyms	ILKAP; integrin-linked kinase-associated serine/threonine phosphatase; integrin linked kinase associated serine/threonine phosphatase 2C; integrin-linked kinase-associated serine/threonine phosphatase 2C; DKFZP434J2031; FLJ10181; protein phosphatase 2c, delta isozyme; integrin-linked kinase associated phosphatase; ILKAP2; ILKAP3; PP2C-DELTA; MGC4846; DKFZp434J2031;
Gene ID	80895
mRNA Refseq	NM_030768
Protein Refseq	NP_110395
UniProt ID	Q9H0C8

 Tel: 1-631-559-9269 1-516-512-3133

 Email: info@creative-biomart.com  Fax: 1-631-938-8127

 45-1 Ramsey Road, Shirley, NY 11967, USA

**Quality Control
Testing**



12.5% SDS-PAGE Stained with Coomassie Blue

 Tel: 1-631-559-9269 1-516-512-3133

 Email: info@creative-biomart.com  Fax: 1-631-938-8127

 45-1 Ramsey Road, Shirley, NY 11967, USA