

Recombinant Human ILVBL Full Length Transmembrane protein, His-tagged

Cat. No. ILVBL-1316H Lot. No. (See product label)

SPECIFICATION

Product Overview	Recombinant Human ILVBL protein(A1L0T0)(1-632aa), fused to N-terminal His tag, was expressed in E. coli.
Species	Human
Source	E.coli
ProteinLength	1-632aa
Form	<p>If the delivery form is liquid, the default storage buffer is Tris/PBS-based buffer, 5%-50% glycerol.</p> <p>If the delivery form is lyophilized powder, the buffer before lyophilization is Tris/PBS-based buffer, 6% Trehalose, pH 8.0.</p>
Molecular Mass	70.7 kDa
AA Sequence	<p>METPAAAAPAGSLFPSFLLACGTLVAALLGAAHRLGLFYQLLHKVDKASVRHGGEN VAA VLRAHGVRFIFTLVGGHISPLLVACEKLGIRVVDTRHEVTAVFAADAMARLSGT VGVA AV TAGPGLTNTVTAVKNAQMAQSPILLGGAASTLLQNRGALQAVDQLSLFR PLCKFCVSVR RVRDIVPTLRAAMAAAQSGTPGPVFVELPVDVLYPYFMVQKEMVPA KPPKGLVGRVSWY LENYLANLFAGAWEPQPEGPLPLDIPQASPPQQVQRCVEILSR AKRPLMVLGSQLLTPTS ADKLRAAVETLGVPCFLGGMARGLLGRNHPLHIRENRS AALKKADVIVLAGTVCDFRLSY GRVLSHSSKIIIVNRNREEMLLNSDIFWKPQEAVQG DVGSFVLKLV EGLQGQTWAPDWVE ELREADRQKEQTFREKAAMPVAQHLNPVQV</p>

 Tel: 1-631-559-9269 1-516-512-3133

 Email: info@creative-biomart.com  Fax: 1-631-938-8127

 45-1 Ramsey Road, Shirley, NY 11967, USA

LQLVEETLPDNSILVVDGGDFVGTAAHLVQ PRGPLRWLDPGAFGTLGVGAGFALGA
 KLCRPDAEVWCLFGDGAFGYSLIEFDTFVRHKIP VMALVGNDAGWTQISREQVPSL
 GSNVACGLAYTDYHKAAMGLGARGLLLSRENEDQVVKV LHDAQQQCRDGHPPVVV
 NILIGRTDFRDGSIIV

Storage

Store at -20°C/-80°C upon receipt, aliquoting is necessary for multiple use. Avoid repeated freeze-thaw cycles.

Reconstitution

Please reconstitute protein in deionized sterile water to a concentration of 0.1-1.0 mg/mL. We recommend to add 5-50% of glycerol (final concentration) and aliquot for long-term storage at -20°C/-80°C. Our default final concentration of glycerol is 50%.

GENE INFORMATION

Gene Name

ILVBL ilvB (bacterial acetolactate synthase)-like [Homo sapiens]

Official Symbol

ILVBL

Synonyms

ILVBL; ilvB (bacterial acetolactate synthase)-like; acetolactate synthase-like protein; 209L8; acetolactate synthase homolog; AHAS; FLJ39061; ILV2H; MGC1269; MGC19535; ilvB-like protein;

Gene ID

10994

mRNA Refseq

NM_006844

Protein Refseq

NP_006835

MIM

605770

UniProt ID

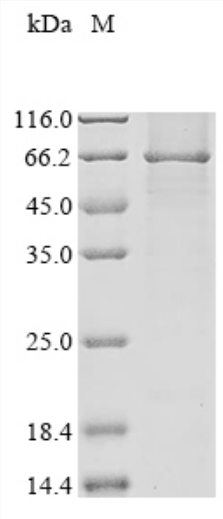
A1L0T0

 Tel: 1-631-559-9269 1-516-512-3133

 Email: info@creative-biomart.com  Fax: 1-631-938-8127

 45-1 Ramsey Road, Shirley, NY 11967, USA

SDS-PAGE



 Tel: 1-631-559-9269 1-516-512-3133

 Email: info@creative-biomart.com  Fax: 1-631-938-8127

 45-1 Ramsey Road, Shirley, NY 11967, USA