

## Recombinant Human ILVBL Protein, GST-tagged

Cat. No. ILVBL-5154H Lot. No. (See product label)

### SPECIFICATION

<b>Product Overview</b>	Human ILVBL full-length ORF ( AAH00109, 1 a.a. - 224 a.a.) recombinant protein with GST-tag at N-terminal.
<b>Species</b>	Human
<b>Source</b>	Wheat Germ
<b>Description</b>	The protein encoded by this gene shares similarity with several thiamine pyrophosphate-binding proteins identified in bacteria, yeast, and plants. The highest degree of similarity is found with bacterial acetolactate synthases (AHAS), which are enzymes that catalyze the first step in branched-chain amino acid biosynthesis. [provided by RefSeq]
<b>Molecular Mass</b>	50.38 kDa
<b>AA Sequence</b>	METPAAAAPAGSLFPSFLLACGTLVAALLGAAHRLGLFYQLLHKVDKASVRHGGEN VAAVLRAGHVRFIFTLVGGHISPLLVACEKLGIRVVDTRHEVTAVFAADAMARLSGTV GVAAVTAGPGLTNTVTAVKNAQMAQSPILLGGAASTLLQNRGALQAVDQLSLFRPP GCGQHPHWEDGLPRWLHCCIGPCGSGRLAAFLPLDCVQLVWSLIACPGPIP
<b>Applications</b>	Enzyme-linked Immunoabsorbent Assay Western Blot (Recombinant protein) Antibody Production Protein Array

 Tel: 1-631-559-9269 1-516-512-3133

 Email: [info@creative-biomart.com](mailto:info@creative-biomart.com)  Fax: 1-631-938-8127

 45-1 Ramsey Road, Shirley, NY 11967, USA

<b>Notes</b>	Best use within three months from the date of receipt of this protein.
<b>Storage</b>	Store at -80 centigrade. Aliquot to avoid repeated freezing and thawing.
<b>Storage Buffer</b>	50 mM Tris-HCl, 10 mM reduced Glutathione, pH=8.0 in the elution buffer.

## GENE INFORMATION

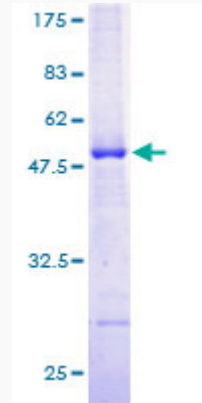
<b>Gene Name</b>	ILVBL ilvB (bacterial acetolactate synthase)-like [ Homo sapiens ]
<b>Official Symbol</b>	ILVBL
<b>Synonyms</b>	ILVBL; ilvB (bacterial acetolactate synthase)-like; acetolactate synthase-like protein; 209L8; acetolactate synthase homolog; AHAS; FLJ39061; ILV2H; MGC1269; MGC19535; ilvB-like protein;
<b>Gene ID</b>	10994
<b>mRNA Refseq</b>	NM_006844
<b>Protein Refseq</b>	NP_006835
<b>MIM</b>	605770
<b>UniProt ID</b>	A1L0T0

 Tel: 1-631-559-9269 1-516-512-3133

 Email: [info@creative-biomart.com](mailto:info@creative-biomart.com)  Fax: 1-631-938-8127

 45-1 Ramsey Road, Shirley, NY 11967, USA

**Quality Control  
Testing**



12.5% SDS-PAGE Stained with Coomassie Blue

 Tel: 1-631-559-9269 1-516-512-3133

 Email: [info@creative-biomart.com](mailto:info@creative-biomart.com)  Fax: 1-631-938-8127

 45-1 Ramsey Road, Shirley, NY 11967, USA